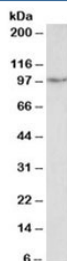


PDE4B Antibody (R34331)

Catalog No.	Formulation	Size
R34331-100UG	0.5 mg/ml in 1X TBS, pH7.3, with 0.5% BSA (US sourced) and 0.02% sodium azide	100 ug

[Bulk quote request](#)

Availability	1-3 business days
Species Reactivity	Human
Predicted Reactivity	Mouse
Format	Antigen affinity purified
Host	Goat
Clonality	Polyclonal (goat origin)
Isotype	Goat Ig
Purity	Antigen affinity
Gene ID	5142
Applications	Western Blot : 2-5ug/ml ELISA (peptide) LOD : 1:32000
Limitations	This PDE4B antibody is available for research use only.



Western blot testing of human uterus lysate with PDE4B antibody at 2ug/ml. PDE4B (~83 kDa predicted) was detected at 95-97 kDa, consistent with expression of the longer PDE4B5 isoform and phosphorylation-dependent mobility shift characteristic of PDE4 family enzymes.

Description

Additional name(s) for this target protein: Phosphodiesterase 4B

Application Notes

Optimal dilution of the PDE4B antibody should be determined by the researcher.

Immunogen

Amino acids IDIATEDKSPVDT were used as the immunogen for this PDE4B antibody.

Storage

Aliquot and store the PDE4B antibody at -20oC.