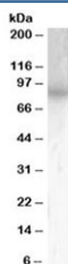


PDE4B Antibody (R33479)

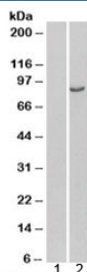
Catalog No.	Formulation	Size
R33479-100UG	0.5 mg/ml in 1X TBS, pH7.3, with 0.5% BSA (US sourced) and 0.02% sodium azide	100 ug

[Bulk quote request](#)

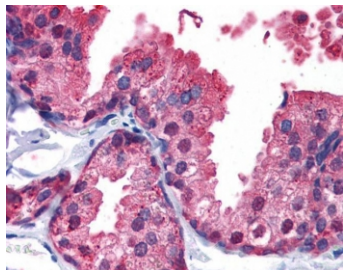
Availability	1-3 business days
Species Reactivity	Human
Predicted Reactivity	Mouse, Rat
Format	Antigen affinity purified
Host	Goat
Clonality	Polyclonal (goat origin)
Isotype	Goat Ig
Purity	Antigen affinity
Gene ID	5142
Localization	Cytoplasmic
Applications	Western Blot : 0.5-1.5ug/ml IHC (FFPE) : 5ug/ml ELISA (peptide) LOD : 1:8000
Limitations	This PDE4B antibody is available for research use only.



Western blot testing of mouse brain lysate with PDE4B antibody at 0.5ug/ml. Predicted molecular weight: ~83 kDa, routinely observed at 83~98 kDa.



Western blot of HEK293 lysate overexpressing human PDE4B probed with PDE4B antibody. (mock transfection in lane 1). Predicted molecular weight: ~83 kDa, routinely observed at 83~98 kDa.



IHC testing of FFPE human prostate tissue with PDE4B antibody at 5ug/ml. Required HIER: steamed antigen retrieval with pH6 citrate buffer; AP-staining.

Description

Additional name(s) for this target protein: Phosphodiesterase 4B

Application Notes

Optimal dilution of the PDE4B antibody should be determined by the researcher.

Immunogen

Amino acids DIDIATEDKSPVDT were used as the immunogen for this PDE4B antibody.

Storage

Aliquot and store the PDE4B antibody at -20oC.