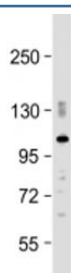


PDE2A Antibody / Phosphodiesterase 2A (F53920)

Catalog No.	Formulation	Size
F53920-0.05ML	In 1X PBS, pH 7.4, with 0.09% sodium azide	0.05 ml

Bulk quote request

Availability	1-3 business days
Species Reactivity	Mouse
Predicted Reactivity	Bovine, Human, Rat
Format	Antigen affinity purified
Clonality	Polyclonal (rabbit origin)
Isotype	Rabbit Ig
Purity	Antigen affinity
UniProt	O00408
Applications	Western Blot : 1:1000-2000
Limitations	This PDE2A antibody is available for research use only.



Western blot testing of mouse brain lysate with PDE2A antibody at 1:2000. Predicted molecular weight: 106 kDa.

Description

Phosphodiesterase 2A is a cyclic nucleotide phosphodiesterase with a dual- specificity for the second messengers cAMP and cGMP, which are key regulators of many important physiological processes.

Application Notes

Titration of the PDE2A antibody may be required due to differences in protocols and /substrate sensitivity.

Immunogen

A portion of amino acids 780-810 from the mouse protein was used as the immunogen for the PDE2A antibody.

Storage

Aliquot the PDE2A antibody and store frozen at -20oC or colder. Avoid repeated freeze-thaw cycles.