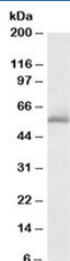


PDE1A Antibody (R33529)

Catalog No.	Formulation	Size
R33529-100UG	0.5 mg/ml in 1X TBS, pH7.3, with 0.5% BSA (US sourced) and 0.02% sodium azide	100 ug

[Bulk quote request](#)

Availability	1-3 business days
Species Reactivity	Human
Predicted Reactivity	Cow, Mouse, Rat
Format	Antigen affinity purified
Host	Goat
Clonality	Polyclonal (goat origin)
Isotype	Goat Ig
Purity	Antigen affinity
Gene ID	5136
Applications	Western Blot : 1-3ug/ml ELISA (peptide) LOD : 1:64000
Limitations	This PDE1A antibody is available for research use only.



Western blot testing of human cerebellum lysate with PDE1A antibody at 1ug/ml.
Predicted molecular weight: ~62kDa.

Description

Additional name(s) for this target protein: Phosphodiesterase 1A

Application Notes

Optimal dilution of the PDE1A antibody should be determined by the researcher.

1. This PDE1A antibody is specific for isoform 1 of the protein.

Immunogen

Amino acids DLHKNSDLVNAE were used as the immunogen for this PDE1A antibody.

Storage

Aliquot and store the PDE1A antibody at -20oC.