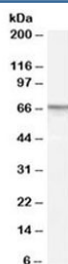


PDE11A Antibody (R34913)

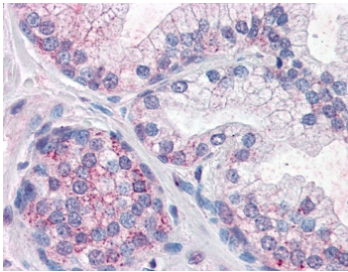
Catalog No.	Formulation	Size
R34913-100UG	0.5 mg/ml in 1X TBS, pH7.3, with 0.5% BSA (US sourced) and 0.02% sodium azide	100 ug

[Bulk quote request](#)

Availability	1-3 business days
Species Reactivity	Human
Predicted Reactivity	Mouse, Rat, Dog
Format	Antigen affinity purified
Host	Goat
Clonality	Polyclonal (goat origin)
Isotype	Goat Ig
Purity	Antigen affinity
Gene ID	50940
Localization	Cytoplasmic
Applications	Western Blot : 0.5-1.5ug/ml IHC (FFPE) : 10ug/ml ELISA (peptide) LOD : 1:2000
Limitations	This PDE11A antibody is available for research use only.



Western blot testing of human prostate lysate with PDE11A antibody at 1ug/ml.
Predicted molecular weight: ~66 kDa.



IHC testing of FFPE human prostate tissue with PDE11A antibody at 10ug/ml. Required HIER: steamed antigen retrieval with pH6 citrate buffer; AP-staining.

Description

Additional name(s) for this target protein: Phosphodiesterase 11A

Application Notes

Optimal dilution of the PDE11A antibody should be determined by the researcher.

Immunogen

Amino acids NSFKESMEKSSYSD were used as the immunogen for this PDE11A antibody.

Storage

Aliquot and store the PDE11A antibody at -20oC.