

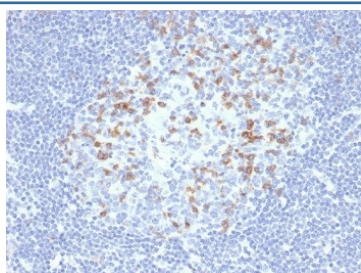
PDCD1 Antibody / PD-1 [clone PDCD1/4231R] (V4965)

Catalog No.	Formulation	Size
V4965-100UG	0.2 mg/ml in 1X PBS with 0.1 mg/ml BSA (US sourced), 0.05% sodium azide	100 ug
V4965-20UG	0.2 mg/ml in 1X PBS with 0.1 mg/ml BSA (US sourced), 0.05% sodium azide	20 ug
V4965SAF-100UG	1 mg/ml in 1X PBS; BSA free, sodium azide free	100 ug

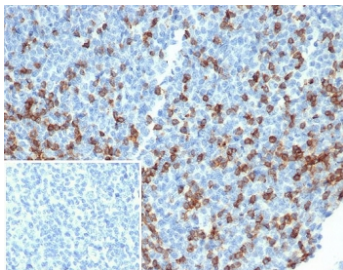
Recombinant **RABBIT MONOCLONAL**

[Bulk quote request](#)

Availability	1-3 business days
Species Reactivity	Human
Format	Purified
Clonality	Recombinant Rabbit Monoclonal
Isotype	Rabbit IgG, kappa
Clone Name	PDCD1/4231R
Purity	Protein A/G affinity
UniProt	Q15116
Localization	Cell surface, Cytoplasm
Applications	ELISA (Order BSA-free Format For Coating) : Immunohistochemistry (FFPE) : 1-2ug/ml for 30 min at RT
Limitations	This PDCD1 antibody is available for research use only.



IHC staining of FFPE human lymph node tissue with PD1 (CD279) antibody (clone PDCD1/4231R). HIER: boil tissue sections in pH 9 10mM Tris with 1mM EDTA for 20 min and allow to cool before testing.



IHC staining of FFPE human tonsil tissue with PD1 (CD279) antibody (clone PDCD1/4231R). Inset: PBS used in place of primary Ab (secondary Ab negative control).
HIER: boil tissue sections in pH 9 10mM Tris with 1mM EDTA for 20 min and allow to cool before testing.

Description

PDCD-1 (programmed cell death-1 protein), also designated CD279, is a type I transmembrane receptor and a member of the immunoglobulin gene superfamily. It is expressed on activated T-cells, B-cells, and myeloid cells. Anti-PDCD-1 is a marker of angioimmunoblastic lymphoma and suggests a unique cell of origin for this neoplasm. Unlike CD10 and BCL6, PDCD-1 is expressed by few B-cells, so anti-PDCD-1 may be a more specific and useful diagnostic marker in angioimmunoblastic lymphoma. In addition, PDCD-1 expression provides evidence that angioimmunoblastic lymphoma is a neoplasm derived from germinal center-associated T-cells.

Application Notes

Optimal dilution of the PDCD1 antibody should be determined by the researcher.

Immunogen

A recombinant fragment corresponding to the extracellular domain of human PDCD1 protein was used as the immunogen for the PDCD1 antibody.

Storage

Aliquot the PDCD1 antibody and store frozen at -20oC or colder. Avoid repeated freeze-thaw cycles.