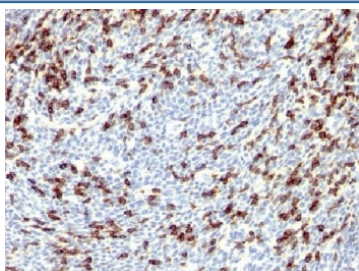


## PD1 Antibody (V3384)

Catalog No.	Formulation	Size
V3384-100UG	0.2 mg/ml in 1X PBS with 0.1 mg/ml BSA (US sourced) and 0.05% sodium azide	100 ug
V3384-20UG	0.2 mg/ml in 1X PBS with 0.1 mg/ml BSA (US sourced) and 0.05% sodium azide	20 ug
V3384SAF-100UG	1 mg/ml in 1X PBS; BSA free, sodium azide free	100 ug

[Bulk quote request](#)

<b>Availability</b>	1-3 business days
<b>Species Reactivity</b>	Human
<b>Format</b>	Purified
<b>Host</b>	Rabbit
<b>Clonality</b>	Polyclonal (rabbit origin)
<b>Isotype</b>	Rabbit IgG
<b>Purity</b>	Protein A affinity chromatography
<b>UniProt</b>	Q15116
<b>Localization</b>	Cell surface & cytoplasmic
<b>Applications</b>	Immunohistochemistry (FFPE) : 1-2ug/ml for 30 min at RT
<b>Limitations</b>	This PD1 antibody is available for research use only.



IHC testing of FFPE human tonsil with PD1 antibody. Required HIER: steam sections in 10mM Tris with 1mM EDTA, pH 9, for 10-20 min.

## Description

PD1 (Programmed cell death-1 protein), also called PD1 and CD279, is a type I transmembrane receptor and a member of the immunoglobulin gene superfamily. It is expressed on activated T-cells, B-cells, and myeloid cells. Anti-

PDCD1 is a marker of angioimmunoblastic lymphoma and suggests a unique cell of origin for this neoplasm. Unlike CD10 and BCL6, PDCD1 is expressed by few B-cells, so may be a more specific and useful diagnostic marker in angioimmunoblastic lymphoma.

## Application Notes

Titration of the PD1 antibody may be required for optimal performance.

## Immunogen

A full-length human protein was used as the immunogen for the PD1 antibody.

## Storage

Store the PD1 antibody at 2-8°C (with azide) or aliquot and store at -20°C or colder (without azide).