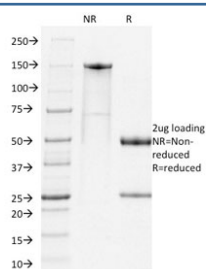


PD1 Antibody / PDCD1 [clone RMP1-14] (V8347)

Catalog No.	Formulation	Size
V8347-100UG	0.2 mg/ml in 1X PBS with 0.1 mg/ml BSA (US sourced) and 0.05% sodium azide	100 ug
V8347-20UG	0.2 mg/ml in 1X PBS with 0.1 mg/ml BSA (US sourced) and 0.05% sodium azide	20 ug
V8347SAF-100UG	1 mg/ml in 1X PBS; BSA free, sodium azide free	100 ug

Bulk quote request

Availability	1-3 business days
Species Reactivity	Mouse
Format	Purified
Clonality	Monoclonal (rat origin)
Isotype	Rat IgG2a, kappa
Clone Name	RMP1-14
Purity	Protein G affinity chromatography
UniProt	Q02242
Applications	ELISA (order BSA/azide-free Format For Coating) : Neutralization Studies (order BSA/azide-free Format) : Flow Cytometry : 1-2ug/10 ⁶ cells in 0.1ml Immunofluorescence : 0.5-1ug/ml
Limitations	This PD1 antibody is available for research use only.



SDS-PAGE analysis of purified, BSA-free PD1 antibody (clone RMP1-14) as confirmation of integrity and purity.

Description

PD-1 is expressed on a subset of CD4-CD8-thymocytes, and on activated T and B cells. PD-1 is thought to be involved in

lymphocyte clonal selection and peripheral tolerance. The PD-1 ligands, PD-L1 (also known as B7-H1) and PD-L2 (B7-DC), are members of the B7 immunoglobulin superfamily. PD-1 is transiently expressed on CD4 and CD8 thymocytes as well as activated T and B-lymphocytes and myeloid cells. Additionally, Pdc1 mRNA is expressed in developing B-lymphocytes during the pro-B-cell stage. **The RMP1-14 antibody has been reported to block the binding of PD-1 to its ligands (B7-H1 and B7-DC) and to inhibit T cell proliferation and cytokine production co-stimulated by macrophages (but not by dendritic cells and B cells).**

Application Notes

Optimal dilution of the PD1 antibody should be determined by the researcher.

Immunogen

PDCD1 transfected BHK cells were used as the immunogen for the PD1 antibody.

Storage

Store the PD1 antibody at 2-8°C (with azide) or aliquot and store at -20°C or colder (without azide).