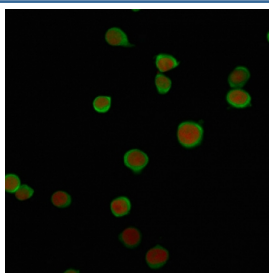


PD-L2 Antibody [clone PDL2/2676] (V7581)

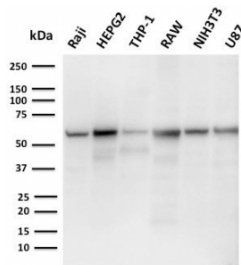
Catalog No.	Formulation	Size
V7581-100UG	0.2 mg/ml in 1X PBS with 0.1 mg/ml BSA (US sourced) and 0.05% sodium azide	100 ug
V7581-20UG	0.2 mg/ml in 1X PBS with 0.1 mg/ml BSA (US sourced) and 0.05% sodium azide	20 ug
V7581SAF-100UG	1 mg/ml in 1X PBS; BSA free, sodium azide free	100 ug

Bulk quote request

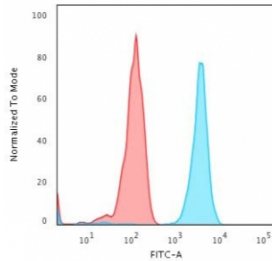
Availability	1-3 business days
Species Reactivity	Human
Format	Purified
Host	Mouse
Clonality	Monoclonal (mouse origin)
Isotype	Mouse IgG1, kappa
Clone Name	PDL2/2676
Purity	Protein G affinity chromatography
UniProt	Q9BQ51
Localization	Cytoplasm, cell surface
Applications	ELISA (order BSA/sodium Azide-free Format For Coating) : Flow Cytometry : 1-2ug/10 ⁶ cells Immunofluorescence : 1-2ug/ml Western Blot : 1-2ug/ml
Limitations	This PD-L2 antibody is available for research use only.



Immunofluorescent staining of human Jurkat cells with PD-L2 antibody (green, clone PDL2/2676) and Reddot nuclear stain (red).

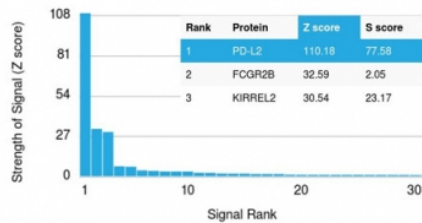


Western blot testing of 1) human Raji, 2) human HepG2, 3) human ThP-1, 4) mouse RAW264.7, 5) mouse NIH-3T3 and 6) human U-87 MG cell lysate with PD-L2 antibody (clone PDL2/2676). Expected molecular weight: 31-60 kDa depending on glycosylation level.



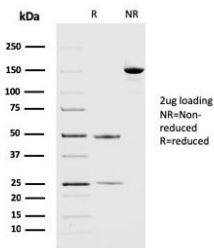
Flow cytometry testing of human Jurkat cells with PD-L2 antibody (clone PDL2/2676); Red=isotype control, Blue= PD-L2 antibody.

Human Protein Microarray Specificity Validation



Analysis of HuProt(TM) microarray containing more than 19,000 full-length human proteins using PD-L2 antibody (clone PDL2/2676). These results demonstrate the foremost specificity of the PDL2/2676 mAb.

Z- and S- score: The Z-score represents the strength of a signal that an antibody (in combination with a fluorescently-tagged anti-IgG secondary Ab) produces when binding to a particular protein on the HuProt(TM) array. Z-scores are described in units of standard deviations (SD's) above the mean value of all signals generated on that array. If the targets on the HuProt(TM) are arranged in descending order of the Z-score, the S-score is the difference (also in units of SD's) between the Z-scores. The S-score therefore represents the relative target specificity of an Ab to its intended target.



SDS-PAGE analysis of purified, BSA-free PD-L2 antibody (clone PDL2/2676) as confirmation of integrity and purity.

Description

Recognizes a protein identified as PD-L2 (same as PDCD1LG2). Engagement of CD28 by B7-1 (CD80) or B7-2 (CD86) in the presence of antigen promotes T cell proliferation, cytokine production, differentiation of effector T cells and the induction of Bcl-x, a promoter of T cell survival. Conversely, engagement of CTLA4 by B7-1 or B7-2 may inhibit proliferation and IL-2 production. PD-L2 does not bind CD28, cytotoxic T lymphocyte A4 or ICOS (inducible co-stimulator). The constitutive expression of PD-L1 and PD-L2 on parenchymal cells of heart, lung and kidney suggests that the Pcd-1-Pcd-L system could provide unique negative signaling to help prevent autoimmune disease.

Application Notes

Optimal dilution of the PD-L2 antibody should be determined by the researcher.

Immunogen

A recombinant fragment of human PD-L2 protein within amino acids 27-220 was used as the immunogen for the PD-L2 antibody.

Storage

Store the PD-L2 antibody at 2-8°C (with azide) or aliquot and store at -20°C or colder (without azide).