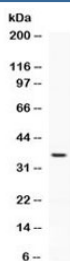


PD-L2 Antibody / CD273 (R32447)

Catalog No.	Formulation	Size
R32447	0.5mg/ml if reconstituted with 0.2ml sterile DI water	100 ug

[Bulk quote request](#)

Availability	1-3 business days
Species Reactivity	Human
Format	Antigen affinity purified
Host	Rabbit
Clonality	Polyclonal (rabbit origin)
Isotype	Rabbit IgG
Purity	Antigen affinity
Buffer	Lyophilized from 1X PBS with 2.5% BSA and 0.025% sodium azide
UniProt	Q9BQ51
Applications	Western Blot : 0.5-1ug/ml
Limitations	This PD-L2 antibody is available for research use only.



Western blot testing of human HeLa cell lysate with PD-L2 antibody at 0.5ug/ml.
Expected molecular weight: 31-60 kDa depending on glycosylation level.

Description

Programmed cell death 1 ligand 2 (also known as PD-L2, B7-DC) is a protein that in humans is encoded by the PDCD1LG2 gene. It is mapped to chromosome 9p24.2. PD-L2 is one of two ligands for programmed death-1 (PD-1), a member of the CD28 family of immuno-receptors. Northern blot analysis detect wide expression of PDL2, with highest levels in placenta, heart, pancreas, lung, and liver, and lower levels in spleen, lymph nodes, and thymus. PDL2 negatively regulates T cells and plays an essential role in immune tolerance.

Application Notes

Optimal dilution of the PD-L2 antibody should be determined by the researcher.

Immunogen

Amino acids L20-T220 were used as the immunogen for the PD-L2 antibody.

Storage

Prior to reconstitution, store at 4oC. After reconstitution, the PD-L2 antibody can be stored for up to one month at 4oC. For long-term, aliquot and store at -20oC. Avoid repeated freezing and thawing.