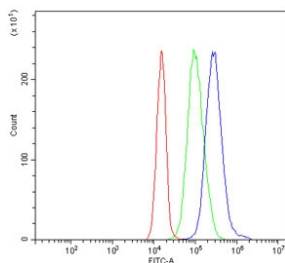


PD-L1 Antibody (R31573)

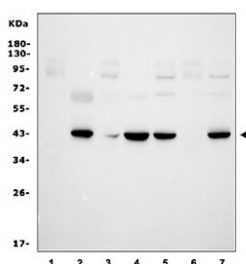
Catalog No.	Formulation	Size
R31573	0.5mg/ml if reconstituted with 0.2ml sterile DI water	100 ug

[Bulk quote request](#)

Availability	1-3 business days
Species Reactivity	Human
Format	Antigen affinity purified
Host	Rabbit
Clonality	Polyclonal (rabbit origin)
Isotype	Rabbit IgG
Purity	Antigen affinity
Buffer	Lyophilized from 1X PBS with 2% Trehalose
Gene ID	29126
Applications	Western Blot : 0.5-1ug/ml Flow Cytometry : 1-3ug/million cells
Limitations	This PD-L1 antibody is available for research use only.



Flow cytometry testing of human JK cells with PD-L1 antibody at 1ug/million cells (blocked with goat sera); Red=cells alone, Green=isotype control, Blue= PD-L1 antibody.



Western blot testing of human 1) PC-3, 2) placenta, 3) HepG2, 4) ThP-1, 5) K562, 6) A549 and 7) HeLa cell lysate with PD-L1 antibody. Predicted molecular weight ~34 kDa (unmodified), 45-70 kDa (glycosylated).

Description

Programmed death-ligand 1, also known as CD274 or B7-H1 is a protein that in humans is encoded by the CD274 gene. It is a 33-70 kDa type 1 transmembrane protein that has been speculated to play a major role in suppressing the immune system during particular events such as pregnancy, tissue allografts, autoimmune disease and other disease states such as hepatitis. Upregulation on tumor MDCs downregulates T-cell immunity and PD-L1 blockade may represent an approach for cancer immunotherapy. It can provide positive costimulatory signals for innate and adaptive immunity and for protection against intracellular bacterial infection. It has been found that PD1/PDL1 pathway may be a good target for restoring antitumor immunity in ovarian cancer.

This PD-L1 antibody is part of a [broader PD-L1 antibody panel](#) offered by NSJ Bioreagents.

Application Notes

The stated application concentrations are suggested starting points. Titration of the PD-L1 antibody may be required due to differences in protocols and secondary/substrate sensitivity.

Immunogen

Human partial recombinant protein (AA 45-290) was used as the immunogen for this PD-L1 antibody.

Storage

After reconstitution, the PD-L1 antibody can be stored for up to one month at 4oC. For long-term, aliquot and store at -20oC. Avoid repeated freezing and thawing.