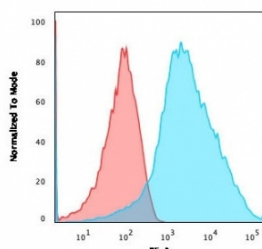


## PD-L1 Antibody [clone PDL1/2746] (V3955PE)

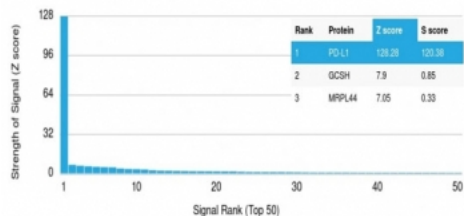
| Catalog No.  | Formulation   | Size      |
|--------------|---|-----------|
| V3955PE-100T | 500 ul at 0.1 mg/ml with 0.1 mg/ml BSA (US sourced), 0.05% sodium azide | 100 Tests |

[Bulk quote request](#)

|                    |  |
|--------------------|--|
| Availability       | 1-3 business days  |
| Species Reactivity | Human  |
| Format             | PE Conjugate   |
| Host               | Mouse  |
| Clonality          | Monoclonal (mouse origin)  |
| Isotype            | Mouse IgG2b, kappa   |
| Clone Name         | PDL1/2746  |
| Purity             | Protein G affinity chromatography  |
| UniProt            | Q9NZQ7   |
| Localization       | Cell surface, cytoplasmic  |
| Applications       | Flow Cytometry : 1-2ug/million cells in 0.1ml<br>Immunofluorescence : 1-2ug/ml |
| Limitations        | This PD-L1 antibody is available for research use only.                        |



Flow cytometry testing of human Jurkat cells with PD-L1 antibody (clone PDL1/2746);  
Red=isotype control, Blue= PD-L1 antibody.



Analysis of HuProt(TM) microarray containing more than 19,000 full-length human proteins using PD-L1 antibody (clone PDL1/2746). These results demonstrate the foremost specificity of the PDL1/2746 mAb.

**Z- and S- score:** The Z-score represents the strength of a signal that an antibody (in combination with a fluorescently-tagged anti-IgG secondary Ab) produces when binding to a particular protein on the HuProt(TM) array. Z-scores are described in units of standard deviations (SD's) above the mean value of all signals generated on that array. If the targets on the HuProt(TM) are arranged in descending order of the Z-score, the S-score is the difference (also in units of SD's) between the Z-scores. The S-score therefore represents the relative target specificity of an Ab to its intended target.

## Description

PD-L1 is a checkpoint regulator in immune cells, it is expressed on immune or non-hematopoietic cells. Expression of the protein is seen during pregnancy where it has a role in suppressing the immune system. PD-L1 induces an inhibitory signal in activated T-cells and promotes T-cell apoptosis. It is overexpressed in a number of different cancers where it is believed to play a significant role in the cancer's ability to evade the immune system.

## Application Notes

Optimal dilution of the PD-L1 antibody should be determined by the researcher.

## Immunogen

A portion of amino acids 39-191 from the human protein was used as the immunogen for this PD-L1 antibody.

## Storage

Store the PD-L1 antibody at 2-8°C, protected from light.