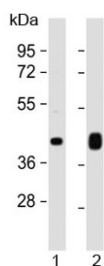


PD-L1 Antibody / C-Terminal Region (F54219)

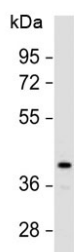
Catalog No.	Formulation	Size
F54219-0.2ML	In 1X PBS, pH 7.4, with 0.09% sodium azide	0.2 ml
F54219-0.05ML	In 1X PBS, pH 7.4, with 0.09% sodium azide	0.05 ml

[Bulk quote request](#)

Availability	1-3 business days
Species Reactivity	Human
Format	Antigen affinity purified
Host	Rabbit
Clonality	Polyclonal
Isotype	Rabbit Ig
Purity	Peptide affinity purified
UniProt	Q9NZQ7
Applications	Western Blot : 1:1000
Limitations	This PD-L1 antibody is available for research use only.



Western blot testing of 1) human heart and 2) human skeletal muscle lysate with C-Terminal Region PD-L1 antibody at 1:1000. Predicted molecular weight: 34-70 kDa depending on glycosylation level.



Western blot testing of human heart lysate with C-Terminal Region PD-L1 antibody at 1:1000. Predicted molecular weight: 34-70 kDa depending on glycosylation level.

Description

This PD-L1 antibody detects the C-Terminal region of PD-L1. Programmed cell death 1 ligand 1 (PD-L1), also called CD274, is involved in the costimulatory signal, essential for T- cell proliferation and production of IL10 and IFNG, in an IL2- dependent and a PDCD1-independent manner. Interaction with PDCD1 inhibits T-cell proliferation and cytokine production.

This PD-L1 antibody is part of a [broader PD-L1 antibody panel](#) offered by NSJ Bioreagents.

Application Notes

The stated application concentrations are suggested starting points. Titration of the PD-L1 antibody may be required due to differences in protocols and secondary/substrate sensitivity.

Immunogen

A portion of amino acids 252-290 from the C-terminal region of the human protein was used as the immunogen for the PD-L1 antibody.

Storage

Aliquot the PD-L1 antibody and store frozen at -20oC or colder. Avoid repeated freeze-thaw cycles.