

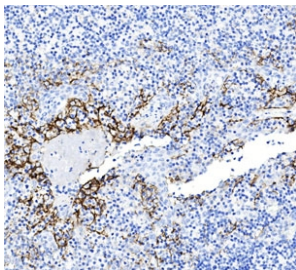
## PD-L1 Antibody / B7-H1 / CD274 [clone AC37] (F55054)

Catalog No.	Formulation	Size
F55054-0.1ML	Antibody in 1X PBS with 0.05% BSA and 0.05% ProClin 300	0.1 ml

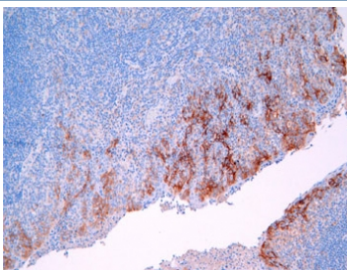
Recombinant **RABBIT MONOCLONAL**

[Bulk quote request](#)

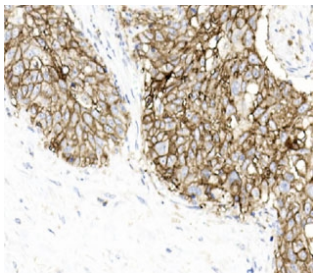
<b>Availability</b>	1-3 business days
<b>Species Reactivity</b>	Human
<b>Format</b>	Purified
<b>Host</b>	Rabbit
<b>Clonality</b>	Recombinant Rabbit Monoclonal
<b>Isotype</b>	Rabbit IgG
<b>Clone Name</b>	AC37
<b>Purity</b>	Protein A affinity chromatography
<b>UniProt</b>	Q9NZQ7
<b>Localization</b>	Cell surface, cytoplasmic
<b>Applications</b>	Western Blot : 1:500-1:1000 Immunohistochemistry (FFPE) : 1:100-1:400
<b>Limitations</b>	This PD-L1 antibody is available for research use only.



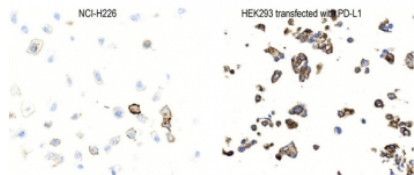
IHC staining of FFPE human tonsil tissue with PD-L1 antibody. HIER: steam section in pH9 EDTA buffer for 20 min and allow to cool prior to staining.



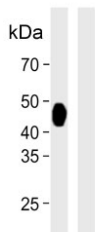
IHC staining of FFPE human tonsil tissue with PD-L1 antibody. HIER: steam section in pH9 EDTA buffer for 20 min and allow to cool prior to staining.



IHC staining of FFPE human esophageal squamous carcinoma tissue with PD-L1 antibody. HIER: steam section in pH9 EDTA buffer for 20 min and allow to cool prior to staining.



IHC staining of FFPE human NCI-H226 cells (left) and PD-L1 transfected HEK293 cells (right) with PD-L1 antibody. HIER: steam section in pH9 EDTA buffer for 20 min and allow to cool prior to staining.



Western blot testing of PD-L1 transfected human 293 cell lysate (left) and non-transfected 293 cell lysate (right). Predicted molecular weight ~34 kDa (unmodified), 45-70 kDa (glycosylated).

## Description

As a ligand for the inhibitory receptor PDCD1/PD-1, PD-L1 modulates the activation threshold of T-cells and limits T-cell effector response. [UniProt]

This PD-L1 antibody is part of a [broader PD-L1 antibody panel](#) offered by NSJ Bioreagents.

## Application Notes

Optimal dilution of the PD-L1 antibody should be determined by the researcher.

## Storage

Aliquot and store the PD-L1 antibody at 2-8°C.