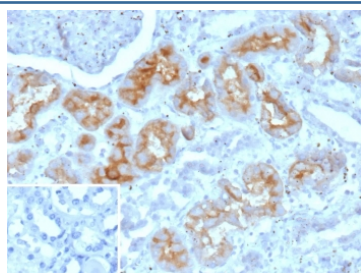


## PD-lbeta Antibody / PDNP3 / ENPP3 / CD203c [clone ENPP3/9891] (V5773)

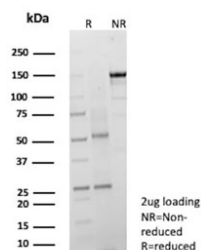
Catalog No.	Formulation	Size
V5773-100UG	0.2 mg/ml in 1X PBS with 0.1 mg/ml BSA (US sourced), 0.05% sodium azide	100 ug
V5773-20UG	0.2 mg/ml in 1X PBS with 0.1 mg/ml BSA (US sourced), 0.05% sodium azide	20 ug
V5773SAF-100UG	1 mg/ml in 1X PBS; BSA free, sodium azide free	100 ug

[Bulk quote request](#)

<b>Availability</b>	1-3 business days
<b>Species Reactivity</b>	Human
<b>Format</b>	Purified
<b>Host</b>	Mouse
<b>Clonality</b>	Monoclonal (mouse origin)
<b>Isotype</b>	Mouse IgG, kappa
<b>Clone Name</b>	ENPP3/9891
<b>Purity</b>	Protein A/G affinity
<b>UniProt</b>	O14638
<b>Localization</b>	Apical cell membrane, Cell membrane, Secreted
<b>Applications</b>	Immunohistochemistry (FFPE) : 1-2ug/ml
<b>Limitations</b>	This PD-lbeta antibody is available for research use only.



IHC staining of FFPE human kidney tissue with PD-lbeta antibody (clone ENPP3/9891). Inset: PBS used in place of primary Ab (secondary Ab negative control). HIER: boil tissue sections in pH 9 10mM Tris with 1mM EDTA for 20 min and allow to cool before testing.



SDS-PAGE analysis of purified, BSA-free PD-Ibeta antibody (clone ENPP3/9891) as confirmation of integrity and purity.

## Description

Ecto-nucleotide pyrophosphatase/phosphodiesterase-I enzymes (E-NPP), a group of type II transmembrane proteins, cleave phosphodiester and phosphosulfate bonds in deoxynucleotides, NAD, and nucleotide sugars. There exist three closely related proteins in mammalian species: E-NPP1 (PC-1), E-NPP2 (PDNP2), and E-NPP-3 (PDNP3) which is also known as CD203c, each expressed in different cells or at different locations in the same cells. Basophils, a type of major proinflammatory effector cells involved in diverse pathologic reactions, exhibit CD203c expression. For instance, CD203c expression increases in response to a variety of allergens, including cat dander, latex, and bee and wasp venom. However, these allergies are not the only condition associated with CD203c upregulation; CD203c upregulation may also serve as a tumor marker for colon carcinoma.

## Application Notes

Optimal dilution of the PD-Ibeta antibody should be determined by the researcher.

## Immunogen

A portion of amino acids 300-600 from human ENPP3 protein was used as the immunogen for the PD-Ibeta antibody.

## Storage

Aliquot the PD-Ibeta antibody and store frozen at -20oC or colder. Avoid repeated freeze-thaw cycles.