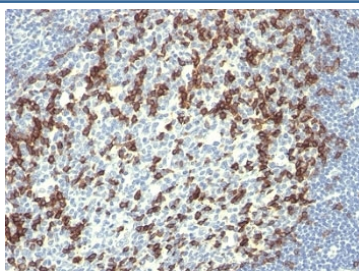


PD-1 Antibody [clone PDCD1/922] (V2776)

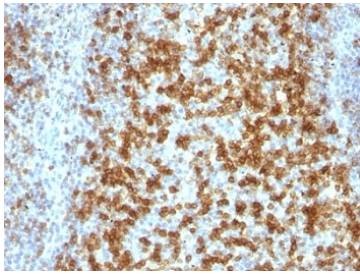
Catalog No.	Formulation	Size
V2776-100UG	0.2 mg/ml in 1X PBS with 0.1 mg/ml BSA (US sourced) and 0.05% sodium azide	100 ug
V2776-20UG	0.2 mg/ml in 1X PBS with 0.1 mg/ml BSA (US sourced) and 0.05% sodium azide	20 ug
V2776SAF-100UG	1 mg/ml in 1X PBS; BSA free, sodium azide free	100 ug
V2776IHC-7ML	Prediluted in 1X PBS with 0.1 mg/ml BSA (US sourced) and 0.05% sodium azide; *For IHC use only*	7 ml

[Bulk quote request](#)

Availability	1-3 business days
Species Reactivity	Human
Format	Purified
Host	Mouse
Clonality	Monoclonal (mouse origin)
Isotype	Mouse IgG1, kappa
Clone Name	PDCD1/922
Purity	Protein G affinity chromatography
UniProt	Q15116
Localization	Cell surface & cytoplasmic
Applications	Immunohistochemistry (FFPE) : 1-2ug/ml for 30 min at RT
Limitations	This PD-1 antibody is available for research use only.



IHC: Formalin-fixed, paraffin-embedded human tonsil stained with PD-1 antibody (PDCD1/922).



IHC: Formalin-fixed, paraffin-embedded human tonsil stained with PD-1 antibody (PDCD1/922).

Description

PDCD-1 (programmed cell death-1 protein), also called PD-1 and CD279, is a type I transmembrane receptor and a member of the immunoglobulin gene superfamily. It is expressed on activated T-cells, B-cells, and myeloid cells. Anti-PDCD-1 is a marker of angioimmunoblastic lymphoma and suggests a unique cell of origin for this neoplasm. Unlike CD10 and BCL6, PDCD-1 is expressed by few B-cells, so anti-PDCD-1 may be a more specific and useful diagnostic marker in angioimmunoblastic lymphoma. In addition, PDCD-1 expression provides evidence that angioimmunoblastic lymphoma is a neoplasm derived from germinal center-associated T-cells.

Application Notes

Optimal dilution of the PD-1 antibody should be determined by the researcher.

1. Staining of formalin-fixed tissues requires boiling tissue sections in 10mM Tris with 1mM EDTA, pH 9, for 10-20 min followed by cooling at RT for 20 min
2. The prediluted format is supplied in a dropper bottle and is optimized for use in IHC. After epitope retrieval step (if required), drip mAb solution onto the tissue section and incubate at RT for 30 min.

Immunogen

Recombinant full-length human protein was used as the immunogen for the PD-1 antibody.

Storage

Store the PD-1 antibody at 2-8°C (with azide) or aliquot and store at -20°C or colder (without azide).