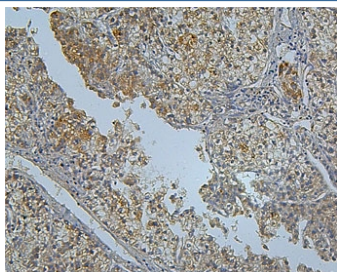


PCSK9 Antibody (RQ5601)

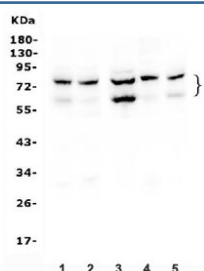
Catalog No.	Formulation	Size
RQ5601	0.5mg/ml if reconstituted with 0.2ml sterile DI water	100 ug

Bulk quote request

Availability	1-3 business days
Species Reactivity	Human
Format	Antigen affinity purified
Clonality	Polyclonal (rabbit origin)
Isotype	Rabbit IgG
Purity	Affinity purified
Buffer	Lyophilized from 1X PBS with 2% Trehalose and 0.025% sodium azide
UniProt	Q8NBP7
Localization	Cell surface, cytoplasm, secreted
Applications	Western Blot : 0.25-0.5ug/ml Immunohistochemistry (FFPE) : 1-2ug/ml Direct ELISA : 0.1-0.5ug/ml
Limitations	This PCSK9 antibody is available for research use only.



IHC staining of FFPE human liver cancer with PCSK9 antibody. HIER: boil tissue sections in pH8 EDTA for 20 min and allow to cool before testing.



Western blot testing of human 1) HeLa, 2) Caco-2, 3) HepG2, 4) A549 and 5) K562 cell lysate with PCSK9 antibody. Predicted molecular weight: pro/mature form ~74/64 kDa.

Description

Proprotein convertase subtilisin/kexin type 9, also known as PCSK9, is an enzyme that in humans is encoded by the PCSK9 gene. This gene encodes a proprotein convertase belonging to the proteinase K subfamily of the secretory subtilase family. By genomic sequence analysis, PCSK9 was mapped to chromosome 1p32. This gene is a crucial player in the regulation of plasma cholesterol homeostasis. It may prevent the recycling of LDLR from endosomes to the cell surface or direct it to lysosomes for degradation. PCSK9 can induce ubiquitination of LDLR leading to its subsequent degradation. This gene is involved in the disposal of non-acetylated intermediates of BACE1 in the early secretory pathway.

Application Notes

Optimal dilution of the PCSK9 antibody should be determined by the researcher.

Immunogen

A human recombinant protein (amino acids S153-Q344) was used as the immunogen for the PCSK9 antibody.

Storage

After reconstitution, the PCSK9 antibody can be stored for up to one month at 4°C. For long-term, aliquot and store at -20°C. Avoid repeated freezing and thawing.