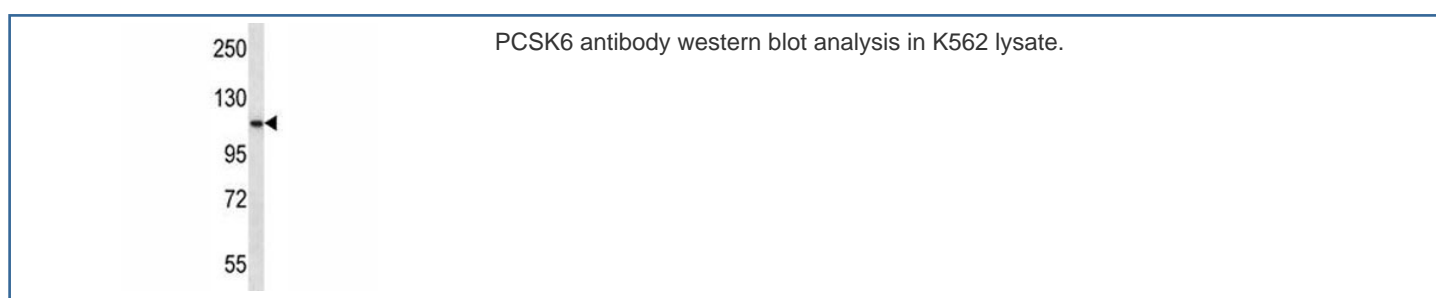


## PCSK6 Antibody / PACE4 (F44208)

Catalog No.	Formulation	Size
F44208-0.4ML	In 1X PBS, pH 7.4, with 0.09% sodium azide	0.4 ml
F44208-0.08ML	In 1X PBS, pH 7.4, with 0.09% sodium azide	0.08 ml

[Bulk quote request](#)

<b>Availability</b>	1-3 business days
<b>Species Reactivity</b>	Human
<b>Format</b>	Antigen affinity purified
<b>Clonality</b>	Polyclonal (rabbit origin)
<b>Isotype</b>	Rabbit Ig
<b>Purity</b>	Antigen affinity
<b>UniProt</b>	P29122
<b>Applications</b>	Western Blot : 1:1000
<b>Limitations</b>	This PCSK6 antibody is available for research use only.



## Description

The protein encoded by this gene belongs to the subtilisin-like proprotein convertase family. The members of this family are proprotein convertases that process latent precursor proteins into their biologically active products. This encoded protein is a calcium-dependent serine endoprotease that can cleave precursor protein at their paired basic amino acid processing sites. Some of its substrates are - transforming growth factor beta related proteins, proalbumin, and von Willebrand factor. This gene is thought to play a role in tumor progression. Alternatively spliced transcript variants encoding different isoforms have been identified.

## Application Notes

Titration of the PCSK6 antibody may be required due to differences in protocols and secondary/substrate sensitivity.

## **Immunogen**

A portion of amino acids 659-688 from the human protein was used as the immunogen for this PCSK6 antibody.

## **Storage**

Aliquot the PCSK6 antibody and store frozen at -20oC or colder. Avoid repeated freeze-thaw cycles.