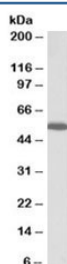


PCOLCE Antibody (R35306)

Catalog No.	Formulation	Size
R35306-100UG	0.5 mg/ml in 1X TBS, pH7.3, with 0.5% BSA (US sourced) and 0.02% sodium azide	100 ug

[Bulk quote request](#)

Availability	1-3 business days
Species Reactivity	Human
Predicted Reactivity	Dog
Format	Antigen affinity purified
Clonality	Polyclonal (goat origin)
Isotype	Goat Ig
Purity	Antigen affinity
Gene ID	5118
Applications	Western Blot : 0.3-1ug/ml ELISA (peptide) LOD : 1:128000
Limitations	This PCOLCE antibody is available for research use only.



Western blot testing of human skin lysate with PCOLCE antibody at 0.3ug/ml. Predicted molecular weight: ~48kDa.

Description

Additional name(s) for this target protein: Procollagen C-endopeptidase enhancer; PCOLCE

Application Notes

Optimal dilution of the PCOLCE antibody should be determined by the researcher.

Immunogen

Amino acids QILTNLSKRKCPSQP were used as the immunogen for this PCOLCE antibody.

Storage

Aliquot and store the PCOLCE antibody at -20oC.