

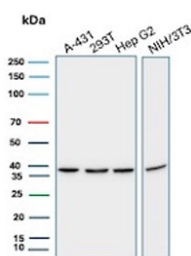
PCNA Antibody / Proliferating Cell Nuclear Antigen [clone rPCNA/8859] (V4826)

Catalog No.	Formulation	Size
V4826-100UG	0.2 mg/ml in 1X PBS with 0.1 mg/ml BSA (US sourced), 0.05% sodium azide	100 ug
V4826-20UG	0.2 mg/ml in 1X PBS with 0.1 mg/ml BSA (US sourced), 0.05% sodium azide	20 ug
V4826SAF-100UG	1 mg/ml in 1X PBS; BSA free, sodium azide free	100 ug

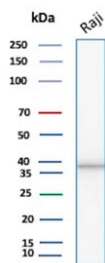
Recombinant MOUSE MONOCLONAL

[Bulk quote request](#)

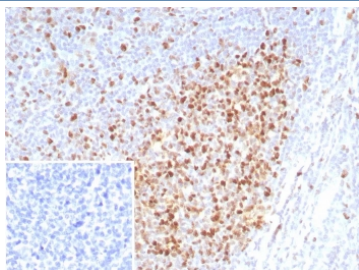
Availability	1-3 business days
Species Reactivity	Human
Format	Purified
Clonality	Recombinant Mouse Monoclonal
Isotype	Mouse IgG1, kappa
Clone Name	rPCNA/8859
Purity	Protein A/G affinity
UniProt	P12004
Localization	Nucleus, Cytoplasm
Applications	Immunohistochemistry (FFPE) : 1-2ug/ml for 30 min at RT Western Blot : 2-4ug/ml
Limitations	This PCNA antibody is available for research use only.



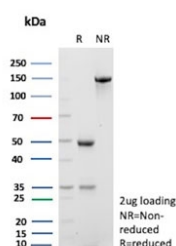
Western blot testing of human A431, 293T and HepG2 cell lysate and mouse NIH 3T3 cell lysate with PCNA antibody. Predicted molecular weight ~29 kDa, routinely observed at 29~36 kDa.



Western blot testing of human Raji cell lysate with PCNA antibody. Predicted molecular weight ~29 kDa, routinely observed at 29~36 kDa.



IHC staining of FFPE human tonsil tissue with PCNA antibody (clone rPCNA/8859) at 2ug/ml. Inset: PBS used in place of primary Ab (secondary Ab negative control). HIER: boil tissue sections in pH 9 10mM Tris with 1mM EDTA for 20 min and allow to cool before testing.



SDS-PAGE analysis of purified, BSA-free PCNA antibody (clone rPCNA/8859) as confirmation of integrity and purity.

Description

Recognizes a non-histone protein of 36kDa, which is identified as proliferating cell nuclear antigen (PCNA). It is also known as cyclin or polymerase delta auxiliary protein. Elevated expression of PCNA/cyclin has been shown in the nucleus during late G1 phase immediately before the onset of DNA synthesis, becoming maximal during S-phase and declining during G2 and M phases. This mAb is excellent for multiple applications.

Application Notes

Optimal dilution of the PCNA antibody should be determined by the researcher.

Immunogen

Recombinant full-length human PCNA protein was used as the immunogen for the PCNA antibody.

Storage

Aliquot the PCNA antibody and store frozen at -20oC or colder. Avoid repeated freeze-thaw cycles.

