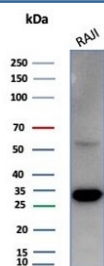


PCNA Antibody / Proliferating Cell Nuclear Antigen [clone PCNA/4540] (V4822)

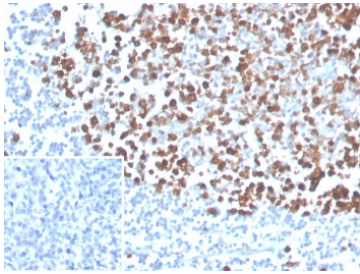
Catalog No.	Formulation	Size
V4822-100UG	0.2 mg/ml in 1X PBS with 0.1 mg/ml BSA (US sourced), 0.05% sodium azide	100 ug
V4822-20UG	0.2 mg/ml in 1X PBS with 0.1 mg/ml BSA (US sourced), 0.05% sodium azide	20 ug
V4822SAF-100UG	1 mg/ml in 1X PBS; BSA free, sodium azide free	100 ug

[Bulk quote request](#)

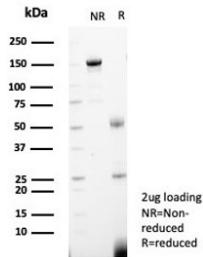
Availability	1-3 business days
Species Reactivity	Human
Format	Purified
Host	Mouse
Clonality	Monoclonal (mouse origin)
Isotype	Mouse IgG1, kappa
Clone Name	PCNA/4540
Purity	Protein A/G affinity
UniProt	P12004
Localization	Nucleus, Cytoplasm
Applications	Western Blot : 1-2ug/ml Immunohistochemistry (FFPE) : 1-2ug/ml for 30 min at RT
Limitations	This PCNA antibody is available for research use only.



Western blot testing of human Raji cell lysate with PCNA antibody (clone PCNA/4540). Predicted molecular weight ~29 kDa, routinely observed at 29~36 kDa.



IHC staining of FFPE human tonsil tissue with PCNA antibody (clone PCNA/4540) at 2ug/ml. Inset: PBS used in place of primary Ab (secondary Ab negative control). HIER: boil tissue sections in pH 9 10mM Tris with 1mM EDTA for 20 min and allow to cool before testing.



SDS-PAGE analysis of purified, BSA-free PCNA antibody (clone PCNA/4540) as confirmation of integrity and purity.

Description

Recognizes a non-histone protein of 36kDa, which is identified as proliferating cell nuclear antigen (PCNA). It is also known as cyclin or polymerase delta auxiliary protein. Elevated expression of PCNA/cyclin has been shown in the nucleus during late G1 phase immediately before the onset of DNA synthesis, becoming maximal during S-phase and declining during G2 and M phases. This mAb is excellent for multiple applications.

Application Notes

Optimal dilution of the PCNA antibody should be determined by the researcher.

Immunogen

Recombinant full-length human PCNA protein was used as the immunogen for the PCNA antibody.

Storage

Aliquot the PCNA antibody and store frozen at -20oC or colder. Avoid repeated freeze-thaw cycles.