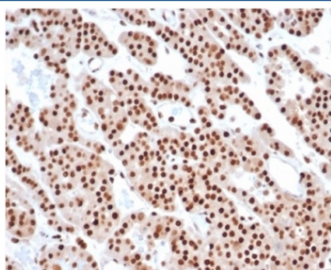


PCNA Antibody [clone PCNA/6580] (V8995)

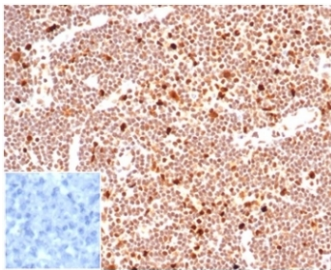
Catalog No.	Formulation	Size
V8995-100UG	0.2 mg/ml in 1X PBS with 0.1 mg/ml BSA (US sourced), 0.05% sodium azide	100 ug
V8995-20UG	0.2 mg/ml in 1X PBS with 0.1 mg/ml BSA (US sourced), 0.05% sodium azide	20 ug
V8995SAF-100UG	1 mg/ml in 1X PBS; BSA free, sodium azide free	100 ug

[Bulk quote request](#)

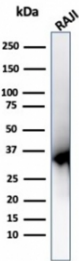
Availability	1-3 business days
Species Reactivity	Human
Format	Purified
Clonality	Monoclonal (mouse origin)
Isotype	Mouse IgG2a, kappa
Clone Name	PCNA/6580
Purity	Protein A/G affinity
UniProt	P12004
Localization	Predominantly nuclear, some cytoplasmic
Applications	Western Blot : 1-2ug/ml Immunohistochemistry (FFPE) : 1-2ug/ml
Limitations	This PCNA antibody is available for research use only.



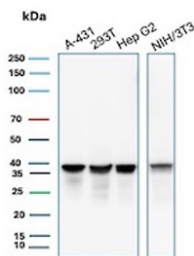
IHC staining of FFPE human tonsil tissue with PCNA antibody (clone PCNA/6580) at 2ug/ml. HIER: boil tissue sections in pH 9 10mM Tris with 1mM EDTA for 20 min and allow to cool before testing.



IHC staining of FFPE human lymph node tissue with PCNA antibody (clone PCNA/6580) at 2ug/ml. Negative control inset: PBS instead of primary antibody to control for secondary binding. HIER: boil tissue sections in pH 9 10mM Tris with 1mM EDTA for 20 min and allow to cool before testing.



Western blot testing of human Raji cell lysate using PCNA antibody (clone PCNA/6580).



Western blot testing of human A431, 293T and HepG2 cell lysate and mouse NIH 3T3 cell lysate with PCNA antibody. Predicted molecular weight ~29 kDa, routinely observed at 29~36 kDa.

Description

Recognizes a non-histone protein of 36kDa, which is identified as proliferating cell nuclear antigen (PCNA). It is also known as cyclin or polymerase delta auxiliary protein. Elevated expression of PCNA/cyclin has been shown in the nucleus during late G1 phase immediately before the onset of DNA synthesis, becoming maximal during S-phase and declining during G2 and M phases.

Application Notes

Optimal dilution of the PCNA antibody should be determined by the researcher.

Immunogen

Recombinant full-length human PCNA protein was used as the immunogen for the PCNA antibody.

Storage

Aliquot the PCNA antibody and store frozen at -20oC or colder. Avoid repeated freeze-thaw cycles.

