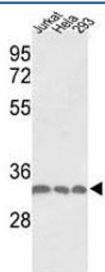


## PCNA Antibody (F48249)

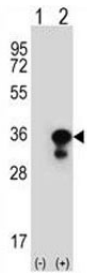
Catalog No.	Formulation	Size
F48249-0.4ML	In 1X PBS, pH 7.4, with 0.09% sodium azide	0.4 ml
F48249-0.08ML	In 1X PBS, pH 7.4, with 0.09% sodium azide	0.08 ml

[Bulk quote request](#)

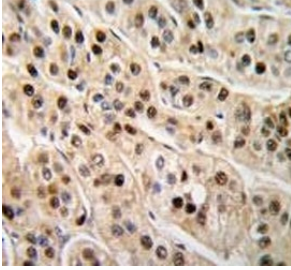
<b>Availability</b>	1-3 business days
<b>Species Reactivity</b>	Human
<b>Predicted Reactivity</b>	Bovine, Hamster, Primate, Rat
<b>Format</b>	Purified
<b>Host</b>	Rabbit
<b>Clonality</b>	Polyclonal (rabbit origin)
<b>Isotype</b>	Rabbit Ig
<b>Purity</b>	Purified
<b>UniProt</b>	P12004
<b>Applications</b>	Western Blot : 1:1000 IHC (Paraffin) : 1:10-1:50 Immunofluorescence : 1:10-1:50
<b>Limitations</b>	This PCNA antibody is available for research use only.



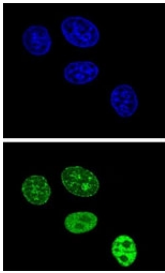
Western blot analysis of PCNA antibody and Jurkat, HeLa, 293 lysate. Expected molecular weight: 29-36 kDa.



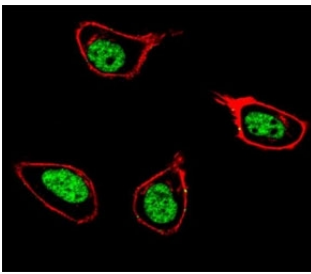
Western blot analysis of PCNA antibody and 293 cell lysate (2 ug/lane) either nontransfected (Lane 1) or transiently transfected (2) with the PCNA gene.



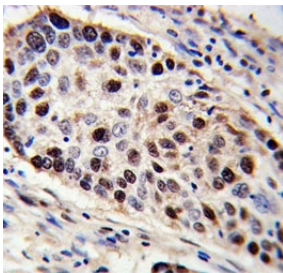
IHC analysis of FFPE human hepatocarcinoma tissue stained with PCNA antibody



Confocal immunofluorescent analysis of PCNA antibody with HeLa cells followed by Alexa Fluor 488-conjugated goat anti-rabbit IgG (green). DAPI was used as a nuclear counterstain (blue).



Confocal immunofluorescent analysis of PCNA antibody with 293 cells followed by Alexa Fluor 488-conjugated goat anti-rabbit IgG (green). Actin filaments have been labeled with Alexa Fluor 555 Phalloidin (red). DAPI was used as a nuclear counterstain (blue).



PCNA antibody immunohistochemistry analysis in formalin fixed and paraffin embedded human lung carcinoma.

## Description

PCNA is found in the nucleus and is a cofactor of DNA polymerase delta. This protein acts as a homotrimer and helps increase the processivity of leading strand synthesis during DNA replication. In response to DNA damage, this protein is ubiquitinated and is involved in the RAD6-dependent DNA repair pathway.

## Application Notes

Titration of the PCNA antibody may be required due to differences in protocols and secondary/substrate sensitivity.

## **Immunogen**

A portion of amino acids 231-261 from the human protein was used as the immunogen for this PCNA antibody.

## **Storage**

Aliquot the PCNA antibody and store frozen at -20oC or colder. Avoid repeated freeze-thaw cycles.