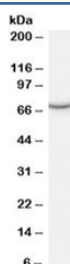


PCK1 Antibody / PEPCK1 / PEPC (R33822)

Catalog No.	Formulation	Size
R33822-100UG	0.5 mg/ml in 1X TBS, pH7.3, with 0.5% BSA (US sourced) and 0.02% sodium azide	100 ug

[Bulk quote request](#)

Availability	1-3 business days
Species Reactivity	Human
Format	Antigen affinity purified
Clonality	Polyclonal (goat origin)
Isotype	Goat Ig
Purity	Antigen affinity
Gene ID	5105
Applications	Western Blot : 0.5-1.5ug/ml ELISA (peptide) LOD : 1:16000
Limitations	This PCK1 antibody is available for research use only.



Western blot testing of human kidney lysate with PCK1 antibody at 0.5ug/ml. Predicted molecular weight: ~69kDa.

Description

Additional name(s) for this target protein: Phosphoenolpyruvate carboxykinase 1, PEPCKC

Application Notes

Optimal dilution of the PCK1 antibody should be determined by the researcher.

Immunogen

Amino acids EKEVEDIEKYLEDDQ were used as the immunogen for this PCK1 antibody.

Storage

Aliquot and store the PCK1 antibody at -20oC.