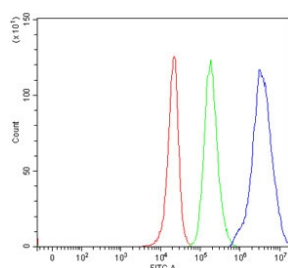


PCH2 Antibody / Pachytene checkpoint protein 2 homolog / TRIP13 (RQ7460)

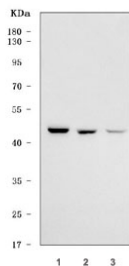
Catalog No.	Formulation	Size
RQ7460	0.5mg/ml if reconstituted with 0.2ml sterile DI water	100 ug

[Bulk quote request](#)

Availability	1-3 business days
Species Reactivity	Human
Format	Antigen affinity purified
Host	Rabbit
Clonality	Polyclonal (rabbit origin)
Isotype	Rabbit IgG
Purity	Antigen affinity purified
Buffer	Lyophilized from 1X PBS with 2% Trehalose
UniProt	Q15645
Applications	Western Blot : 0.5-1ug/ml Flow Cytometry : 1-3ug/million cells Direct ELISA : 0.1-0.5ug/ml
Limitations	This PCH2 antibody is available for research use only.



Flow cytometry testing of human 293T cells with PCH2 antibody at 1ug/million cells (blocked with goat sera); Red=cells alone, Green=isotype control, Blue= PCH2 antibody.



Western blot testing of human 1) HeLa, 2) 293T and 3) Jurkat cell lysate with PCH2 antibody. Predicted molecular weight ~49 kDa.

Description

TRIP13 is a mammalian gene that encodes the thyroid receptor-interacting protein 13. This gene encodes a protein that interacts with thyroid hormone receptors, also known as hormone-dependent transcription factors. The gene product interacts specifically with the ligand binding domain. This gene is one of several that may play a role in early-stage non-small cell lung cancer.

Application Notes

Optimal dilution of the PCH2 antibody should be determined by the researcher.

Immunogen

E. coli-derived recombinant human protein (amino acids M1-Q421) was used as the immunogen for the PCH2 antibody.

Storage

After reconstitution, the PCH2 antibody can be stored for up to one month at 4°C. For long-term, aliquot and store at -20°C. Avoid repeated freezing and thawing.