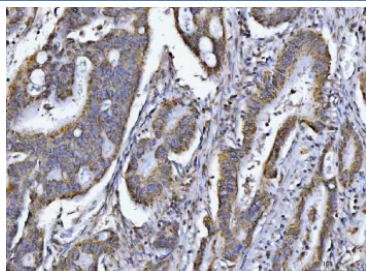


## PCCB Antibody / Propionyl-CoA carboxylase beta chain (RQ7949)

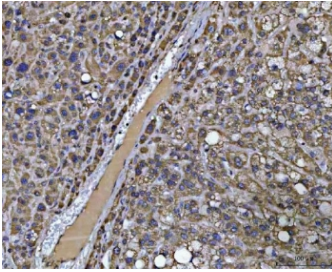
Catalog No.	Formulation	Size
RQ7949	0.5mg/ml if reconstituted with 0.2ml sterile DI water	100 ug

### Bulk quote request

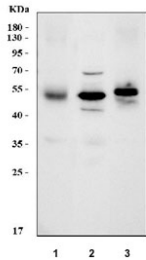
<b>Availability</b>	1-3 business days
<b>Species Reactivity</b>	Human, Mouse, Rat
<b>Format</b>	Antigen affinity purified
<b>Host</b>	Rabbit
<b>Clonality</b>	Polyclonal (rabbit origin)
<b>Isotype</b>	Rabbit IgG
<b>Purity</b>	Antigen affinity purified
<b>Buffer</b>	Lyophilized from 1X PBS with 2% Trehalose
<b>UniProt</b>	P05166
<b>Localization</b>	Cytoplasmic
<b>Applications</b>	Western Blot : 0.5-1ug/ml Immunohistochemistry (FFPE) : 2-5ug/ml Flow Cytometry : 1-3ug/million cells Immunofluorescence : 5ug/ml Direct ELISA : 0.1-0.5ug/ml
<b>Limitations</b>	This PCCB antibody is available for research use only.



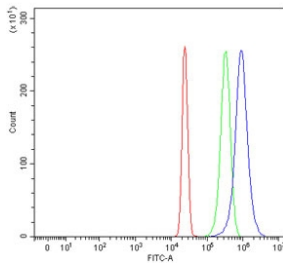
IHC staining of FFPE human colon adenocarcinoma tissue with PCCB antibody. HIER: boil tissue sections in pH8 EDTA for 20 min and allow to cool before testing.



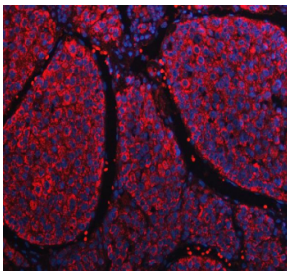
IHC staining of FFPE human liver cancer tissue with PCCB antibody. HIER: boil tissue sections in pH8 EDTA for 20 min and allow to cool before testing.



Western blot testing of 1) human HCCT, 2) rat liver and 3) mouse liver tissue lysate with PCCB antibody. Predicted molecular weight: 58-61 kDa (two isoforms).



Flow cytometry testing of human HepG2 cells with PCCB antibody at 1ug/million cells (blocked with goat sera); Red=cells alone, Green=isotype control, Blue= PCCB antibody.



Immunofluorescent staining of FFPE human liver cancer tissue with PCCB antibody (red) and DAPI nuclear stain (blue). HIER: steam section in pH8 EDTA buffer for 20 min.

## Description

The protein encoded by this gene is a subunit of the propionyl-CoA carboxylase (PCC) enzyme, which is involved in the catabolism of propionyl-CoA. PCC is a mitochondrial enzyme that probably acts as a dodecamer of six alpha subunits and six beta subunits. This gene encodes the beta subunit of PCC. Defects in this gene are a cause of propionic acidemia type II (PA-2). Multiple transcript variants encoding different isoforms have been found for this gene.

## Application Notes

Optimal dilution of the PCCB antibody should be determined by the researcher.

## Immunogen

E. coli-derived recombinant human protein (amino acids D83-L539) was used as the immunogen for the PCCB antibody.

## Storage

After reconstitution, the PCCB antibody can be stored for up to one month at 4oC. For long-term, aliquot and store at -20oC. Avoid repeated freezing and thawing.

