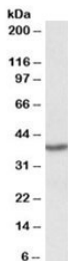


## PCBP1 Antibody (R35929)

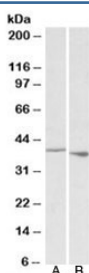
Catalog No.	Formulation	Size
R35929-100UG	0.5 mg/ml in 1X TBS, pH7.3, with 0.5% BSA (US sourced) and 0.02% sodium azide	100 ug

[Bulk quote request](#)

<b>Availability</b>	1-3 business days
<b>Species Reactivity</b>	Human, Rat
<b>Predicted Reactivity</b>	Dog, Mouse
<b>Format</b>	Antigen affinity purified
<b>Host</b>	Goat
<b>Clonality</b>	Polyclonal (goat origin)
<b>Isotype</b>	Goat Ig
<b>Purity</b>	Antigen affinity
<b>Gene ID</b>	5093
<b>Applications</b>	Western Blot : 0.1-0.3ug/ml ELISA (peptide) LOD : 1:8000
<b>Limitations</b>	This PCBP1 antibody is available for research use only.



Western blot testing of PBMC lysate with PCBP1 antibody at 0.1ug/ml.  
Predicted/observed molecular weight: ~38kDa.



Western blot of rat A) spleen and B) thymus lysate with PCBP1 antibody at 0.1ug/ml.  
Predicted/observed molecular weight: ~38kDa.

## Description

Additional name(s) for this target protein: Poly(rC) binding protein 1

## Application Notes

Optimal dilution of the PCBP1 antibody should be determined by the researcher.

## Immunogen

Amino acids SIQGQHTISPLD were used as the immunogen for this PCBP1 antibody.

## Storage

Aliquot and store the PCBP1 antibody at -20oC.