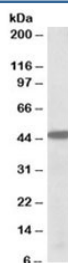


PBX1 Antibody (R33189)

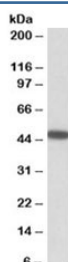
Catalog No.	Formulation	Size
R33189-100UG	0.5 mg/ml in 1X TBS, pH7.3, with 0.5% BSA (US sourced) and 0.02% sodium azide	100 ug

[Bulk quote request](#)

Availability	1-3 business days
Species Reactivity	Human, Mouse, Rat
Predicted Reactivity	Dog
Format	Antigen affinity purified
Host	Goat
Clonality	Polyclonal (goat origin)
Isotype	Goat Ig
Purity	Antigen affinity
Gene ID	5087
Applications	Western Blot : 0.3-1ug/ml ELISA (peptide) LOD : 1:32000
Limitations	This PBX1 antibody is available for research use only.



Western blot testing of K562 lysate with PBX1 antibody at 0.5ug/ml. Predicted molecular weight: ~46kDa.



Western blot of mouse eye lysate with PBX1 antibody at 0.5ug/ml. Predicted molecular weight: ~46kDa.

Description

Additional name(s) for this target protein: Pre-B-cell leukemia homeobox 1

Application Notes

Optimal dilution of the PBX1 antibody should be determined by the researcher.

Immunogen

Amino acids ATNVSAHGSQANSPS were used as the immunogen for this PBX1 antibody.

Storage

Aliquot and store the PBX1 antibody at -20oC.