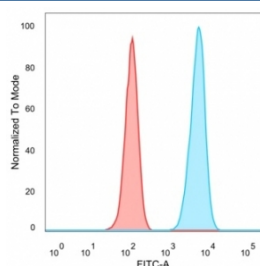


PBX1 Antibody [clone PCRP-PBX1-3C8] (V8884)

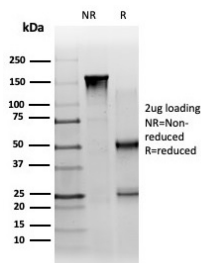
Catalog No.	Formulation	Size
V8884-100UG	0.2 mg/ml in 1X PBS with 0.1 mg/ml BSA (US sourced), 0.05% sodium azide	100 ug
V8884-20UG	0.2 mg/ml in 1X PBS with 0.1 mg/ml BSA (US sourced), 0.05% sodium azide	20 ug
V8884SAF-100UG	1 mg/ml in 1X PBS; BSA free, sodium azide free	100 ug

[Bulk quote request](#)

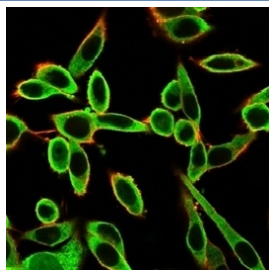
Availability	1-3 business days
Species Reactivity	Human
Format	Purified
Host	Mouse
Clonality	Monoclonal (mouse origin)
Isotype	Mouse IgG2b
Clone Name	PCRP-PBX1-3C8
Purity	Protein A/G affinity
UniProt	P40424
Localization	Nucleus, cytoplasm
Applications	ELISA (order BSA-free Format For Coating) : Flow Cytometry : 1-2ug/million cells Immunofluorescence : 1-2ug/ml
Limitations	This PBX1 antibody is available for research use only.



FACS staining of PFA-fixed human HeLa cells with PBX1 antibody (blue, clone PCRP-PBX1-3C8) and isotype control (red).

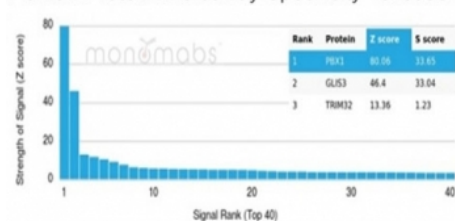


SDS-PAGE analysis of purified, BSA-free PBX1 antibody (PCRP-PBX1-3C8) as confirmation of integrity and purity.



Immunofluorescent staining of PFA-fixed human HeLa cells using PBX1 antibody (green, clone PCRP-PBX1-3C8) and phalloidin (red).

Human Protein Microarray Specificity Validation



Analysis of HuProt(TM) microarray containing more than 19,000 full-length human proteins using PBX1 antibody (clone PCRP-PBX1-3C8). These results demonstrate the foremost specificity of the PCRP-PBX1-3C8 mAb. Z- and S- score: The Z-score represents the strength of a signal that an antibody (in combination with a fluorescently-tagged anti-IgG secondary Ab) produces when binding to a particular protein on the HuProt(TM) array. Z-scores are described in units of standard deviations (SD's) above the mean value of all signals generated on that array. If the targets on the HuProt(TM) are arranged in descending order of the Z-score, the S-score is the difference (also in units of SD's) between the Z-scores. The S-score therefore represents the relative target specificity of an Ab to its intended target.

Description

Pbx 1, 2, 3 and 4 are members of the TALE (three amino acid loop extension) family of homeodomain-containing proteins. Two forms of Pbx 1 and Pbx 3 each differ primarily in their carboxy-termini and result from alternative mRNA splicing. Unlike other homeotic selector genes which are expressed transiently during development and differentiation, Pbx gene transcripts are ubiquitously expressed in both fetal and adult tissues and cell lines. Additionally, Pbx 2 and Pbx 3 transcripts are detected in lymphoid cells, which do not express Pbx 1.

Application Notes

Optimal dilution of the PBX1 antibody should be determined by the researcher.

Immunogen

Recombinant full-length human PBX1 protein was used as the immunogen for the PBX1 antibody.

Storage

Aliquot the PBX1 antibody and store frozen at -20oC or colder. Avoid repeated freeze-thaw cycles.

