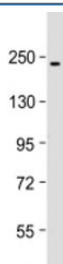


## PBRM1 Antibody / BAF180 [clone 1636CT387.122.52] (F53815)

Catalog No.	Formulation	Size
F53815-0.2ML	In 1X PBS, pH 7.4, with 0.09% sodium azide	0.2 ml
F53815-0.05ML	In 1X PBS, pH 7.4, with 0.09% sodium azide	0.05 ml

[Bulk quote request](#)

<b>Availability</b>	1-3 business days
<b>Species Reactivity</b>	Human
<b>Format</b>	Purified
<b>Clonality</b>	Monoclonal (mouse origin)
<b>Isotype</b>	Mouse IgG1, kappa
<b>Clone Name</b>	1636CT387.122.52
<b>Purity</b>	Protein G affinity chromatography
<b>UniProt</b>	Q86U86
<b>Applications</b>	Western Blot : 1:250-500
<b>Limitations</b>	This PBRM1 antibody is available for research use only.



Western blot testing of HT-1080 cell lysate with PBRM1 antibody at 1:500. Expected molecular weight: 180-193 kDa.

### Description

Polybromo 1/BRG1-associated factor 180 is involved in transcriptional activation and repression of select genes by chromatin remodeling (alteration of DNA-nucleosome topology). Acts as a negative regulator of cell proliferation.

### Application Notes

Titration of the PBRM1 antibody may be required due to differences in protocols and substrate sensitivity.

## Immunogen

A human recombinant protein was used as the immunogen for the PBRM1 antibody.

## Storage

Aliquot the PBRM1 antibody and store frozen at -20oC or colder. Avoid repeated freeze-thaw cycles.