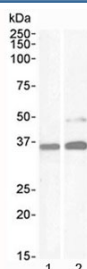


## PAX8 Antibody (R35022)

Catalog No.	Formulation	Size
R35022-100UG	0.5 mg/ml in 1X TBS, pH7.3, with 0.5% BSA (US sourced) and 0.02% sodium azide	100 ug

[Bulk quote request](#)

Availability	1-3 business days
Species Reactivity	Human
Predicted Reactivity	Mouse, Rat
Format	Antigen affinity purified
Host	Goat
Clonality	Polyclonal (goat origin)
Isotype	Goat Ig
Purity	Antigen affinity
Gene ID	7849
Localization	Nuclear, cytoplasmic
Applications	Western Blot : 1-3ug/ml ELISA (peptide) LOD : 1:128000
Limitations	This PAX8 antibody is available for research use only.



Western blot testing of human 1) kidney and 2) HeLa lysate with PAX8 antibody at 1ug/ml). Predicted molecular weight of isoforms 1-5: 31, 35, 42, 43 and 48 kDa, respectively. PAX-8 can also be observed at ~62 kDa.

## Description

Additional name(s) for this target protein: Paired box gene 8

## Application Notes

Optimal dilution of the PAX8 antibody should be determined by the researcher.

## **Immunogen**

Amino acids PHNSIRSGHGGLN were used as the immunogen for this PAX8 antibody.

## **Storage**

Aliquot and store the PAX8 antibody at -20oC.