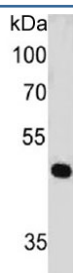


## PAX7 Antibody [clone PAX7/497] (V2217)

Catalog No.	Formulation	Size
V2217-100UG	0.2 mg/ml in 1X PBS with 0.1 mg/ml BSA (US sourced) and 0.05% sodium azide	100 ug
V2217-20UG	0.2 mg/ml in 1X PBS with 0.1 mg/ml BSA (US sourced) and 0.05% sodium azide	20 ug
V2217SAF-100UG	1 mg/ml in 1X PBS; BSA free, sodium azide free	100 ug

[Bulk quote request](#)

<b>Species Reactivity</b>	Human, Mouse, Rat
<b>Format</b>	Purified
<b>Clonality</b>	Monoclonal (mouse origin)
<b>Isotype</b>	Mouse IgG1, kappa
<b>Clone Name</b>	PAX7/497
<b>Purity</b>	Protein G affinity chromatography
<b>Buffer</b>	1X PBS, pH 7.4
<b>Gene ID</b>	5081
<b>Localization</b>	Nuclear
<b>Applications</b>	Immunofluorescence : 0.5-1ug/ml Flow Cytometry : 0.5-1ug/10 <sup>6</sup> cells Western Blot : 0.5-1ug/ml
<b>Limitations</b>	This <b>PAX7 antibody</b> is available for research use only.



Western blot testing of human HeLa cell lysate with PAX7 antibody (clone PAX7/497).  
Expected molecular weight: 55-57 kDa.

## Description

The PAX gene family of nuclear transcription factors is comprised of nine members that function during embryogenesis to regulate the temporal and position-dependent differentiation of cells. In addition, the family is involved in a variety of signal transduction pathways in the adult organism. Mutations in the PAX family of proteins have been linked to disease and cancer in humans. PAX7 is a protein specifically expressed in cultured satellite cell- derived myoblasts. In situ hybridization reveals that PAX7 is also expressed in satellite cells residing in adult muscle. A chromosomal aberration in the gene encoding PAX7 causes rhabdomyosarcoma 2 (RMS2) (also called alveolar rhabdomyosarcoma).

## Application Notes

The concentration stated for each application is a general starting point. Variations in protocols, secondaries and substrates may require the antibody to be titrated up or down for optimal performance.

## Immunogen

Recombinant human PAX7 protein corresponding to amino acids 301-505 was used as the immunogen for this antibody.

## Storage

Store the PAX7 antibody at 2-8oC (with azide) or aliquot and store at -20oC or colder (without azide).