

## PAX7 Antibody (F44080)

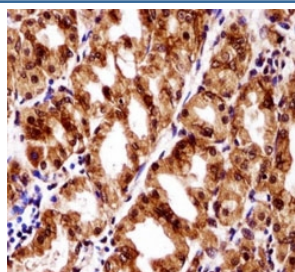
Catalog No.	Formulation	Size
F44080-0.4ML	In 1X PBS, pH 7.4, with 0.09% sodium azide	0.4 ml
F44080-0.08ML	In 1X PBS, pH 7.4, with 0.09% sodium azide	0.08 ml

[Bulk quote request](#)

<b>Availability</b>	1-3 business days
<b>Species Reactivity</b>	Human
<b>Predicted Reactivity</b>	Mouse
<b>Format</b>	Antigen affinity purified
<b>Clonality</b>	Polyclonal (rabbit origin)
<b>Isotype</b>	Rabbit Ig
<b>Purity</b>	Antigen affinity
<b>UniProt</b>	P23759
<b>Localization</b>	Nuclear
<b>Applications</b>	Western Blot : 1:1000 IHC (Paraffin) : 1:10-1:50
<b>Limitations</b>	This PAX7 antibody is available for research use only.



PAX7 antibody western blot analysis in CEM lysate. Expected molecular weight: 55-57 kDa.



PAX7 antibody immunohistochemistry analysis in formalin fixed and paraffin embedded human stomach tissue

## Description

This gene is a member of the paired box (PAX) family of transcription factors. Members of this gene family typically contain a paired box domain, an octapeptide, and a paired-type homeodomain. These genes play critical roles during fetal development and cancer growth. The specific function of the paired box 7 gene is unknown but speculated to involve tumor suppression since fusion of this gene with a forkhead domain family member has been associated with alveolar rhabdomyosarcoma. Three transcript variants encoding different isoforms have been found for this gene.

## Application Notes

Titration of the PAX7 antibody may be required due to differences in protocols and secondary/substrate sensitivity.

## Immunogen

A portion of amino acids 181-210 from the human protein was used as the immunogen for this PAX7 antibody.

## Storage

Aliquot the PAX7 antibody and store frozen at -20oC or colder. Avoid repeated freeze-thaw cycles.