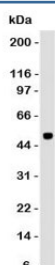


## PAX6 Antibody [clone PBPX6] (V7079)

Catalog No.	Formulation	Size
V7079-100UG	0.2 mg/ml in 1X PBS with 0.1 mg/ml BSA (US sourced) and 0.05% sodium azide	100 ug
V7079-20UG	0.2 mg/ml in 1X PBS with 0.1 mg/ml BSA (US sourced) and 0.05% sodium azide	20 ug
V7079SAF-100UG	1 mg/ml in 1X PBS; BSA free, sodium azide free	100 ug

[Bulk quote request](#)

<b>Species Reactivity</b>	Human
<b>Format</b>	Purified
<b>Clonality</b>	Monoclonal (mouse origin)
<b>Isotype</b>	Mouse IgG1, kappa
<b>Clone Name</b>	PBPX6
<b>Purity</b>	Protein G purified antibody
<b>Gene ID</b>	5080
<b>Localization</b>	Nuclear
<b>Applications</b>	Western Blot : 1-2ug/ml
<b>Limitations</b>	This PAX6 antibody is available for research use only.



Western blot analysis of human cerebellum and PAX6 antibody (clone PBPX6).  
Predicted molecular weight ~48 kDa.

## Description

PAX6 is a homeobox and paired domain-containing protein that binds DNA and functions as a regulator of transcription. Activity of this protein is key in the development of neural tissues, particularly the eye. This gene is regulated by multiple enhancers located up to hundreds of kilobases distant from this locus. Mutations in this gene or in the enhancer regions

can cause ocular disorders such as aniridia and Peter's anomaly. Use of alternate promoters and alternative splicing result in multiple transcript variants encoding different isoforms. [RefSeq]

## Application Notes

The concentration stated for each application is a general starting point. Variations in protocols, secondaries and substrates may require the antibody to be titrated up or down for optimal performance.

## Immunogen

A partial human PAX6 protein was used as the immunogen for this antibody.

## Storage

Store the PAX6 antibody at 2-8oC (with azide) or aliquot and store at -20oC or colder (without azide).