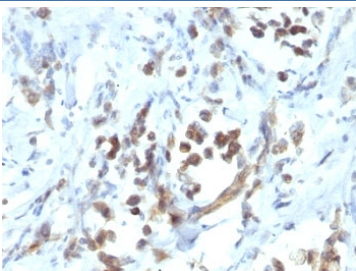


## PAX6 Antibody [clone PAX6/1166] (V2771)

Catalog No.	Formulation	Size
V2771-100UG	0.2 mg/ml in 1X PBS with 0.1 mg/ml BSA (US sourced) and 0.05% sodium azide	100 ug
V2771-20UG	0.2 mg/ml in 1X PBS with 0.1 mg/ml BSA (US sourced) and 0.05% sodium azide	20 ug
V2771SAF-100UG	1 mg/ml in 1X PBS; BSA free, sodium azide free	100 ug
V2771IHC-7ML	Prediluted in 1X PBS with 0.1 mg/ml BSA (US sourced) and 0.05% sodium azide; *For IHC use only*	7 ml

### Bulk quote request

<b>Availability</b>	1-3 business days
<b>Species Reactivity</b>	Human
<b>Format</b>	Purified
<b>Host</b>	Mouse
<b>Clonality</b>	Monoclonal (mouse origin)
<b>Isotype</b>	Mouse IgG1, kappa
<b>Clone Name</b>	PAX6/1166
<b>Purity</b>	Protein G affinity chromatography
<b>UniProt</b>	P26367
<b>Localization</b>	Nuclear
<b>Applications</b>	Immunohistochemistry (FFPE) : 0.5-1ug/ml for 30 min at RT
<b>Limitations</b>	This PAX6 antibody is available for research use only.



IHC: Formalin-fixed, paraffin-embedded human gastric carcinoma stained with PAX6 antibody (PAX6/1166).

## Description

Pax genes contain paired domains with strong homology to genes in *Drosophila*, which are involved in programming early development. Lesions in the Pax-6 gene account for most cases of aniridia, a congenital malformation of the eye, chiefly characterized by iris hypoplasia, which can cause blindness. Pax-6 is involved in other anterior segment malformations besides aniridia, such as Peters anomaly, a major error in the embryonic development of the eye with corneal clouding with variable iridolenticulocorneal adhesions. The Pax-6 gene encodes a transcriptional regulator that recognizes target genes through its paired-type DNA-binding domain. The paired domain is composed of two distinct DNA-binding subdomains, the amino-terminal subdomain and the carboxy-terminal subdomain, which bind respective consensus DNA sequences. The human Pax-6 gene produces two alternatively spliced isoforms that have the distinct structure of the paired domain.

## Application Notes

Optimal dilution of the PAX6 antibody should be determined by the researcher.

1. Staining of formalin-fixed tissues requires boiling tissue sections in 10mM Tris buffer with 1mM EDTA, pH 9.0, for 10-20 min followed by cooling at RT for 20 min
2. The prediluted format is supplied in a dropper bottle and is optimized for use in IHC. After epitope retrieval step (if required), drip mAb solution onto the tissue section and incubate at RT for 30 min.

## Immunogen

A recombinant fragment (N-terminus; aa 1-300) was used as the immunogen for the PAX6 antibody.

## Storage

Store the PAX6 antibody at 2-8oC (with azide) or aliquot and store at -20oC or colder (without azide).