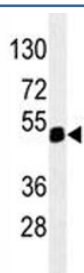


## PAX6 Antibody [clone 193CT15.2.2] (F53525)

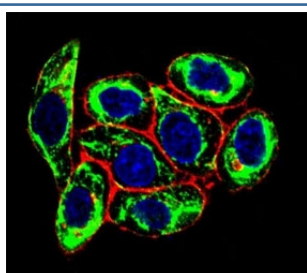
Catalog No.	Formulation	Size
F53525-0.1ML	In ascites with 0.09% sodium azide	0.1 ml

**Bulk quote request**

<b>Availability</b>	1-3 business days
<b>Species Reactivity</b>	Human
<b>Predicted Reactivity</b>	Mouse, Bovine
<b>Format</b>	Ascites
<b>Clonality</b>	Monoclonal (mouse origin)
<b>Isotype</b>	Mouse IgM, k
<b>Clone Name</b>	193CT15.2.2
<b>Purity</b>	Ascites
<b>UniProt</b>	P26367
<b>Applications</b>	Western Blot : 1:500-1:16000 Immunofluorescence : 1:10-1:50
<b>Limitations</b>	This PAX6 antibody is available for research use only.



PAX6 antibody western blot analysis in 293 lysate. Predicted molecular weight ~48kDa.



Confocal immunofluorescent analysis of PAX6 antibody with HeLa cells followed by Alexa Fluor 488-conjugated goat anti-mouse IgG (green). Actin filaments have been labeled with Alexa Fluor 555 Phalloidin (red). DAPI was used as a nuclear counterstain (blue).

## Description

This gene encodes paired box gene 6, one of many human homologs of the *Drosophila melanogaster* gene *prd*. In addition to the hallmark feature of this gene family, a conserved paired box domain, the encoded protein also contains a homeo box domain. Both domains are known to bind DNA, and function as regulators of gene transcription. This gene is expressed in the developing nervous system, and in developing eyes. Mutations in this gene are known to cause ocular disorders such as aniridia and Peter's anomaly. Alternatively spliced transcript variants encoding either the same or different isoform have been found for this gene. [provided by RefSeq].

## Application Notes

Titration of the PAX6 antibody may be required due to differences in protocols and secondary/substrate sensitivity.

## Immunogen

This PAX6 antibody was raised using purified His-tagged recombinant human PAX6.

## Storage

Aliquot the PAX6 antibody and store frozen at -20oC or colder. Avoid repeated freeze-thaw cycles.