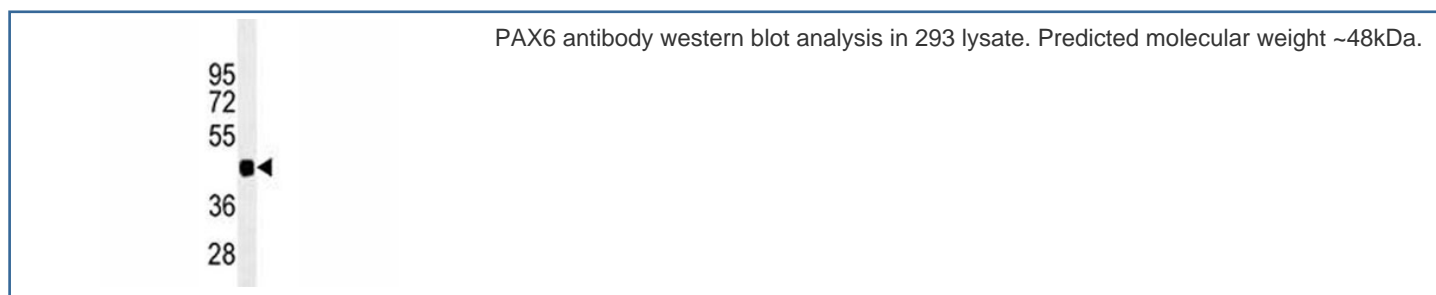


PAX6 Antibody [clone 193CT15.2.2] (F40243)

Catalog No.	Formulation	Size
F40243-0.4ML	In 1X PBS, pH 7.4, with 0.09% sodium azide	0.4 ml
F40243-0.08ML	In 1X PBS, pH 7.4, with 0.09% sodium azide	0.08 ml

[Bulk quote request](#)

Availability	Please inquire
Species Reactivity	Human
Predicted Reactivity	Mouse, Bovine
Format	Purified
Clonality	Monoclonal (mouse origin)
Isotype	Mouse IgM, k
Clone Name	193CT15.2.2
Purity	Purified
UniProt	P26367
Applications	Western Blot : 1:100-1:1000
Limitations	This PAX6 antibody is available for research use only.



Description

This gene encodes paired box gene 6, one of many human homologs of the *Drosophila melanogaster* gene *prd*. In addition to the hallmark feature of this gene family, a conserved paired box domain, the encoded protein also contains a homeo box domain. Both domains are known to bind DNA, and function as regulators of gene transcription. This gene is expressed in the developing nervous system, and in developing eyes. Mutations in this gene are known to cause ocular disorders such as aniridia and Peter's anomaly. Alternatively spliced transcript variants encoding either the same or

different isoform have been found for this gene. [provided by RefSeq].

Application Notes

Titration of the PAX6 antibody may be required due to differences in protocols and secondary/substrate sensitivity.

Immunogen

This PAX6 antibody was produced from a mouse immunized with PAX6 recombinant protein.

Storage

Aliquot the PAX6 antibody and store frozen at -20oC or colder. Avoid repeated freeze-thaw cycles.