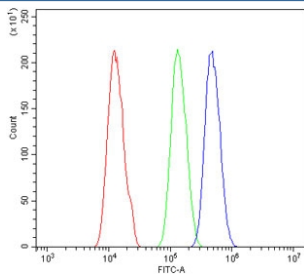


PAX4 Antibody (RQ5748)

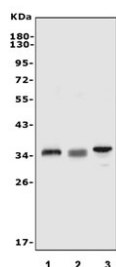
Catalog No.	Formulation	Size
RQ5748	0.5mg/ml if reconstituted with 0.2ml sterile DI water	100 ug

[Bulk quote request](#)

Availability	1-3 business days
Species Reactivity	Human, Mouse, Rat
Format	Antigen affinity purified
Host	Rabbit
Clonality	Polyclonal (rabbit origin)
Isotype	Rabbit IgG
Purity	Affinity purified
Buffer	Lyophilized from 1X PBS with 2% Trehalose and 0.025% sodium azide
UniProt	O43316
Applications	Western Blot : 0.5-1ug/ml Flow Cytometry : 1-3ug/million cells Direct ELISA : 0.1-0.5ug/ml
Limitations	This PAX4 antibody is available for research use only.



Flow cytometry testing of human A431 cells with PAX4 antibody at 1ug/million cells (blocked with goat sera); Red=cells alone, Green=isotype control, Blue= PAX4 antibody.



Western blot testing of 1) human HL60, 2) rat thymus and 3) mouse thymus tissue lysate. Predicted molecular weight ~38 kDa.

Description

Paired box gene 4, also known as PAX4, is a protein which in humans is encoded by the PAX4 gene. This gene is a member of the paired box (PAX) family of transcription factors. Members of this gene family typically contain a paired box domain, an octapeptide, and a paired-type homeodomain. These genes play critical roles during fetal development and cancer growth. The paired box 4 gene is involved in pancreatic islet development and mouse studies have demonstrated a role for this gene in differentiation of insulin-producing beta cells.

Application Notes

Optimal dilution of the PAX4 antibody should be determined by the researcher.

Immunogen

Recombinant human protein (amino acids K76-P350) was used as the immunogen for the PAX4 antibody.

Storage

After reconstitution, the PAX4 antibody can be stored for up to one month at 4oC. For long-term, aliquot and store at -20oC. Avoid repeated freezing and thawing.