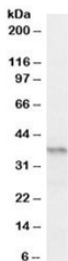


PAX4 Antibody (R34101)

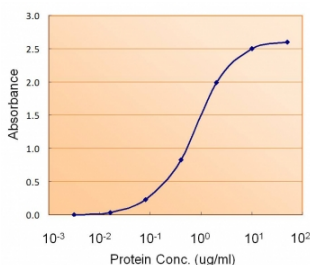
Catalog No.	Formulation	Size
R34101-100UG	0.5 mg/ml in 1X TBS, pH7.3, with 0.5% BSA (US sourced) and 0.02% sodium azide	100 ug

[Bulk quote request](#)

Availability	1-3 business days
Species Reactivity	Human, Mouse
Predicted Reactivity	Dog, Rat
Format	Antigen affinity purified
Host	Goat
Clonality	Polyclonal (goat origin)
Isotype	Goat Ig
Purity	Antigen affinity
Gene ID	5078
Applications	Western Blot : 0.2-0.6ug/ml ELISA (peptide) LOD : 1:64000
Limitations	This PAX4 antibody is available for research use only.



Western blot testing of mouse pancreas lysate with PAX4 antibody at 0.2ug/ml.
Predicted/observed molecular weight: ~37kDa.



Sandwich ELISA using the PAX4 antibody at 1.5ug/ml as the detect.

Description

Additional name(s) for this target protein: Paired box 4

Application Notes

Optimal dilution of the PAX4 antibody should be determined by the researcher.

Immunogen

Amino acids GKLATATSLPEDTVR were used as the immunogen for this PAX4 antibody.

Storage

Aliquot and store the PAX4 antibody at -20oC.