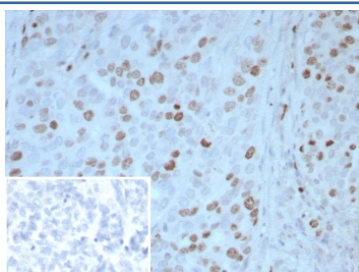


PAX4 Antibody / Paired box 4 [clone PAX4/7598] (V5216)

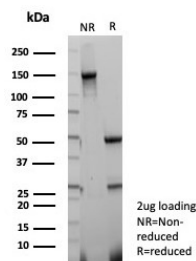
| Catalog No. | Formulation | Size |
|----------------|---|--------|
| V5216-100UG | 0.2 mg/ml in 1X PBS with 0.1 mg/ml BSA (US sourced), 0.05% sodium azide | 100 ug |
| V5216-20UG | 0.2 mg/ml in 1X PBS with 0.1 mg/ml BSA (US sourced), 0.05% sodium azide | 20 ug |
| V5216SAF-100UG | 1 mg/ml in 1X PBS; BSA free, sodium azide free | 100 ug |

[Bulk quote request](#)

| | |
|---------------------------|---|
| Availability | 1-3 business days |
| Species Reactivity | Human |
| Format | Purified |
| Clonality | Monoclonal (mouse origin) |
| Isotype | Mouse IgG1, kappa |
| Clone Name | PAX4/7598 |
| Purity | Protein A/G affinity |
| UniProt | O43316 |
| Localization | Nucleus |
| Applications | Immunohistochemistry (FFPE) : 1-2ug/ml for 30 min at RT |
| Limitations | This PAX4 antibody is available for research use only. |



IHC staining of FFPE human ovarian carcinoma tissue with PAX4 antibody (clone PAX4/7598). Inset: PBS used in place of primary Ab (secondary Ab negative control).
HIER: boil tissue sections in pH 9 10mM Tris with 1mM EDTA for 20 min and allow to cool before testing.



SDS-PAGE analysis of purified, BSA-free PAX4 antibody (clone PAX4/7598) as confirmation of integrity and purity.

Description

Pax-4 (paired box gene 4) protein influences normal differentiation of Insulinproducing beta cells and influences normal pancreatic islet development. Pax-4 protein is a transcriptional repressor that binds to a common cis element in the Glucagon, Insulin and Somatostatin promoters. Mouse Pax-4 transcript is present in pancreatic islets, and the islet beta cell lines MIN6, beta TC and NIT1. Differentiation of endoderm-derived endocrine pancreas is mediated through Pax-4 and Pax-6. Pax-4 may act as a Pax-6 repressor due to the competition for binding sites and lower transactivation potential of Pax-4. The human Pax-4 gene encodes a deduced 350 amino acid protein that is 80% identical to the deduced mouse Pax-4 protein.

Application Notes

Optimal dilution of the PAX4 antibody should be determined by the researcher.

Immunogen

A recombinant partial protein sequence (within amino acids 1-200) from the human protein was used as the immunogen for the PAX4 antibody.

Storage

Aliquot the PAX4 antibody and store frozen at -20oC or colder. Avoid repeated freeze-thaw cycles.