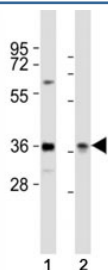


## PAX4 Antibody (F49791)

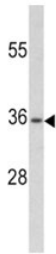
Catalog No.	Formulation	Size
F49791-0.4ML	In 1X PBS, pH 7.4, with 0.09% sodium azide	0.4 ml
F49791-0.08ML	In 1X PBS, pH 7.4, with 0.09% sodium azide	0.08 ml

[Bulk quote request](#)

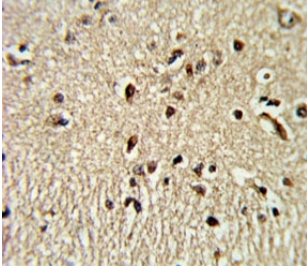
<b>Availability</b>	1-3 business days
<b>Species Reactivity</b>	Human, Rat
<b>Predicted Reactivity</b>	Mouse
<b>Format</b>	Purified
<b>Host</b>	Rabbit
<b>Clonality</b>	Polyclonal (rabbit origin)
<b>Isotype</b>	Rabbit Ig
<b>Purity</b>	Purified
<b>UniProt</b>	O43316
<b>Applications</b>	Western Blot : 1:1000-2000 IHC (Paraffin) : 1:10-1:50 Flow Cytometry : 1:10-1:50
<b>Limitations</b>	This PAX4 antibody is available for research use only.



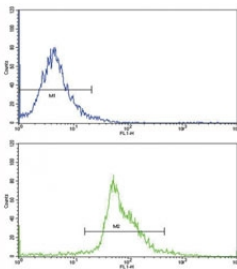
Western blot testing of PAX4 antibody at 1:2000 dilution. Lane 1: human HeLa lysate; 2: rat liver lysate; Predicted molecular weight ~38 kDa.



Western blot analysis of PAX4 antibody and human CEM lysate. Predicted molecular weight ~38 kDa.



IHC analysis of FFPE human brain tissue stained with PAX4 antibody



Flow cytometric analysis of human WiDr cells using PAX4 antibody (bottom histogram) compared to a negative control (top histogram)

## Description

PAX4 is a member of the paired box (PAX) family of transcription factors. These proteins play critical roles during fetal development and cancer growth. The paired box 4 gene is involved in pancreatic islet development and mouse studies have demonstrated a role for this gene in differentiation of insulin-producing beta cells.

## Application Notes

Titration of the PAX4 antibody may be required due to differences in protocols and secondary/substrate sensitivity.

## Immunogen

A portion of amino acids 171-200 from the human protein was used as the immunogen for this PAX4 antibody.

## Storage

Aliquot the PAX4 antibody and store frozen at -20°C or colder. Avoid repeated freeze-thaw cycles.