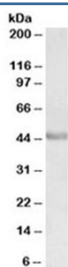


PAX3 Antibody (R36304)

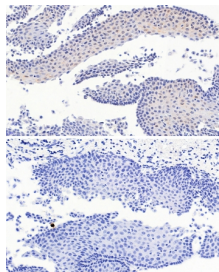
Catalog No.	Formulation	Size
R36304-100UG	0.5 mg/ml in 1X TBS, pH7.3, with 0.5% BSA (US sourced) and 0.02% sodium azide	100 ug

[Bulk quote request](#)

Availability	1-3 business days
Species Reactivity	Human
Predicted Reactivity	Mouse, Rat, Cow
Format	Antigen affinity purified
Clonality	Polyclonal (goat origin)
Isotype	Goat Ig
Purity	Antigen affinity
UniProt	P23760
Localization	Nuclear
Applications	Western Blot : 0.3-1ug/ml IHC (FFPE) : 4.5ug/ml ELISA (peptide) LOD : 1:32000
Limitations	This PAX3 antibody is available for research use only.



Western blot testing of human duodenum lysate with PAX3 antibody at 0.3ug/ml.
Predicted molecular weight: can detect 7 isoforms ranging from 22–56 kDa.



IHC testing of FFPE human esophagus tissue in the presence (top) and absence (bottom) of PAX3 antibody at 4.5ug/ml. Required HIER: steamed antigen retrieval with pH6 citrate buffer; HRP-staining.

Description

Additional name(s) for this target protein: Paired box 3

Application Notes

Optimal dilution of the PAX3 antibody should be determined by the researcher.

1. This Ab can detect isoforms 1-7, ranging from 206-505 amino acids in length.

Immunogen

Amino acids TTLAGAVPRMM were used as the immunogen for this PAX3 antibody. (1)

Storage

Aliquot and store the PAX3 antibody at -20oC.