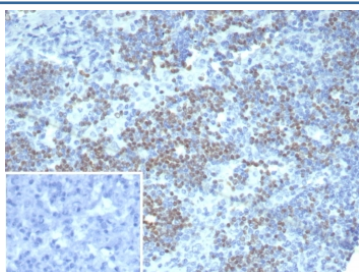


PAX3 Antibody / Paired box 3 [clone PAX3/8426] (V4957)

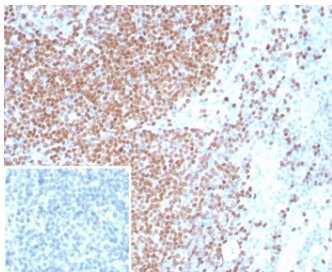
Catalog No.	Formulation	Size
V4957-100UG	0.2 mg/ml in 1X PBS with 0.1 mg/ml BSA (US sourced), 0.05% sodium azide	100 ug
V4957-20UG	0.2 mg/ml in 1X PBS with 0.1 mg/ml BSA (US sourced), 0.05% sodium azide	20 ug
V4957SAF-100UG	1 mg/ml in 1X PBS; BSA free, sodium azide free	100 ug

[Bulk quote request](#)

Availability	1-3 business days
Species Reactivity	Human
Format	Purified
Clonality	Monoclonal (mouse origin)
Isotype	Mouse IgG1, kappa
Clone Name	PAX3/8426
Purity	Protein A/G affinity
UniProt	P23760
Localization	Nucleus
Applications	Immunohistochemistry (FFPE) : 1-2ug/ml for 30 min at RT
Limitations	This PAX3 antibody is available for research use only.



IHC staining of FFPE human lymph node tissue with PAX3 antibody (clone PAX3/8426). Inset: PBS used in place of primary Ab (secondary Ab negative control). HIER: boil tissue sections in pH 9 10mM Tris with 1mM EDTA for 20 min and allow to cool before testing.



IHC staining of FFPE human tonsil tissue with PAX3 antibody (clone PAX3/8426). Inset: PBS used in place of primary Ab (secondary Ab negative control). HIER: boil tissue sections in pH 9 10mM Tris with 1mM EDTA for 20 min and allow to cool before testing.

Description

PAX3 is a transcription factor that may regulate cell proliferation, migration and apoptosis.

Application Notes

Optimal dilution of the PAX3 antibody should be determined by the researcher.

Immunogen

A recombinant partial protein sequence (within amino acids 150-350) from the human protein was used as the immunogen for the PAX3 antibody.

Storage

Aliquot the PAX3 antibody and store frozen at -20oC or colder. Avoid repeated freeze-thaw cycles.