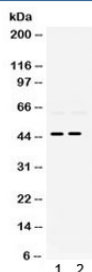


PAX2 Antibody (R32185)

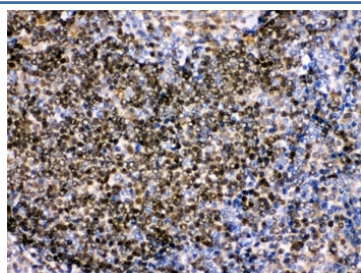
Catalog No.	Formulation	Size
R32185	0.5mg/ml if reconstituted with 0.2ml sterile DI water	100 ug

Bulk quote request

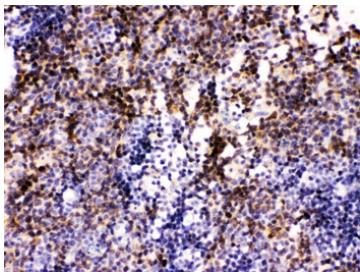
Availability	1-3 business days
Species Reactivity	Human, Mouse, Rat
Format	Antigen affinity purified
Clonality	Polyclonal (rabbit origin)
Isotype	Rabbit IgG
Purity	Antigen affinity
Buffer	Lyophilized from 1X PBS with 2.5% BSA and 0.025% sodium azide
UniProt	Q02962
Localization	Nuclear, nuclear membrane
Applications	Western Blot : 0.1-0.5ug/ml IHC (FFPE) : 0.5-1ug/ml
Limitations	This PAX2 antibody is available for research use only.



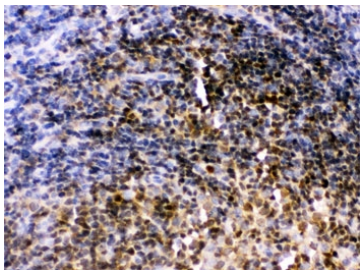
Western blot testing of 1) rat brain and 2) rat lung lysate with PAX2 antibody. Expected/observed molecular weight ~45 kDa.



IHC testing of FFPE human tonsil with PAX2 antibody. HIER: Boil the paraffin sections in pH 6, 10mM citrate buffer for 20 minutes and allow to cool prior to staining.



IHC testing of FFPE mouse lymph node with PAX2 antibody. HIER: Boil the paraffin sections in pH 6, 10mM citrate buffer for 20 minutes and allow to cool prior to staining.



IHC testing of FFPE rat lymph node with PAX2 antibody. HIER: Boil the paraffin sections in pH 6, 10mM citrate buffer for 20 minutes and allow to cool prior to staining.

Description

The PAX2 gene encodes Paired box gene 2, one of many human homologues of the *Drosophila melanogaster* gene *prd*. The central feature of this transcription factor gene family is the conserved DNA-binding paired box domain. PAX2 is believed to be a target of transcriptional suppression by the tumor suppressor gene WT1. Mutations within PAX2 have been shown to result in optic nerve colobomas and renal hypoplasia. Alternative splicing of this gene results in multiple transcript variants.

Application Notes

Optimal dilution of the PAX2 antibody should be determined by the researcher.

Immunogen

Amino acids RKHLRADTFTQQQLEALDRVFERPSYPDVFAQSEH of human PAX2 were used as the immunogen for the PAX2 antibody.

Storage

After reconstitution, the PAX2 antibody can be stored for up to one month at 4°C. For long-term, aliquot and store at -20°C. Avoid repeated freezing and thawing.