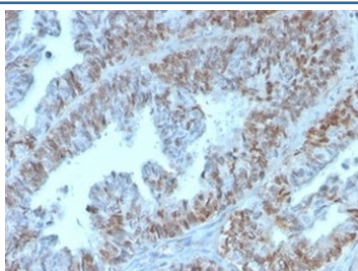


PAX2 Antibody [clone PAX2/1105] (V8806)

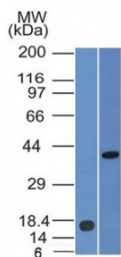
Catalog No.	Formulation	Size
V8806-100UG	0.2 mg/ml in 1X PBS with 0.1 mg/ml BSA (US sourced), 0.05% sodium azide	100 ug
V8806-20UG	0.2 mg/ml in 1X PBS with 0.1 mg/ml BSA (US sourced), 0.05% sodium azide	20 ug
V8806SAF-100UG	1 mg/ml in 1X PBS; BSA free, sodium azide free	100 ug

[Bulk quote request](#)

Availability	1-3 business days
Species Reactivity	Human
Format	Purified
Clonality	Monoclonal (mouse origin)
Isotype	Mouse IgG1, lambda
Clone Name	PAX2/1105
Purity	Protein A/G affinity
UniProt	Q02962
Localization	Nucleus
Applications	ELISA (For Coating Order BSA-free Format) : Western Blot : 1-2ug/ml Immunohistochemistry (FFPE) : 1-2ug/ml
Limitations	This PAX2 antibody is available for research use only.

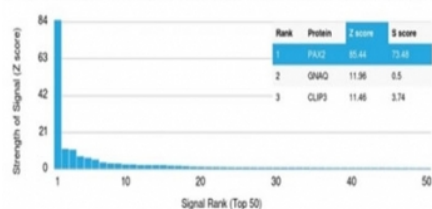


IHC staining of FFPE human colon tissue with PAX2 antibody (clone PAX2/1105). HIER: boil tissue sections in pH 9 10mM Tris with 1mM EDTA for 20 min and allow to cool before testing.

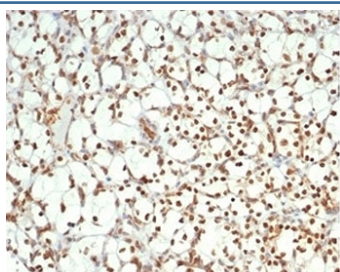


Western blot analysis of (1) recombinant PAX2 protein fragment and (2) human kidney lysate using PAX2 antibody (clone PAX2/1105). Expected molecular weight ~42 kDa.

Human Protein Microarray Specificity Validation



Analysis of HuProt(TM) microarray containing more than 19,000 full-length human proteins using PAX2 antibody (clone PAX2/1105). These results demonstrate the foremost specificity of the PAX2/1105 mAb. Z- and S- score: The Z-score represents the strength of a signal that an antibody (in combination with a fluorescently-tagged anti-IgG secondary Ab) produces when binding to a particular protein on the HuProt(TM) array. Z-scores are described in units of standard deviations (SD's) above the mean value of all signals generated on that array. If the targets on the HuProt(TM) are arranged in descending order of the Z-score, the S-score is the difference (also in units of SD's) between the Z-scores. The S-score therefore represents the relative target specificity of an Ab to its intended target.



IHC staining of FFPE human renal cell carcinoma tissue with PAX2 antibody (clone PAX2/1105). HIER: boil tissue sections in pH 9 10mM Tris with 1mM EDTA for 20 min and allow to cool before testing.

Description

Recognizes a protein of 42kDa, which is identified as PAX2. It is a member of the paired box family of transcription factors, which is required for development and proliferation of the kidney, brain, and m llerian organs. PAX2 genes contain a highly conserved DNA sequence within the paired box region, which encodes a DNA-binding domain, enabling PAX proteins to bind the promoters of specific genes to transcriptionally regulate their expression. PAX2 is specifically expressed in the developing central nervous system, eye, ear, and urogenital tract, and is essential for the development of these organs. In normal adult tissues PAX2 was mainly detected in the urogenital system, including kidney, ureteric epithelium, fallopian tube epithelium, ovary and uterus. In tumors, PAX2 has been detected in renal cell carcinomas, Wilms tumors, nephrogenic adenomas and papillary serous carcinoma of the ovary. PAX2 has been used as a marker for the identification of renal cell carcinoma and ovarian carcinoma by immunohistochemistry.

Application Notes

Optimal dilution of the PAX2 antibody should be determined by the researcher.

Immunogen

A portion of amino acids 223-354 was used as the immunogen for the PAX2 antibody.

Storage

Aliquot the PAX2 antibody and store frozen at -20oC or colder. Avoid repeated freeze-thaw cycles.

