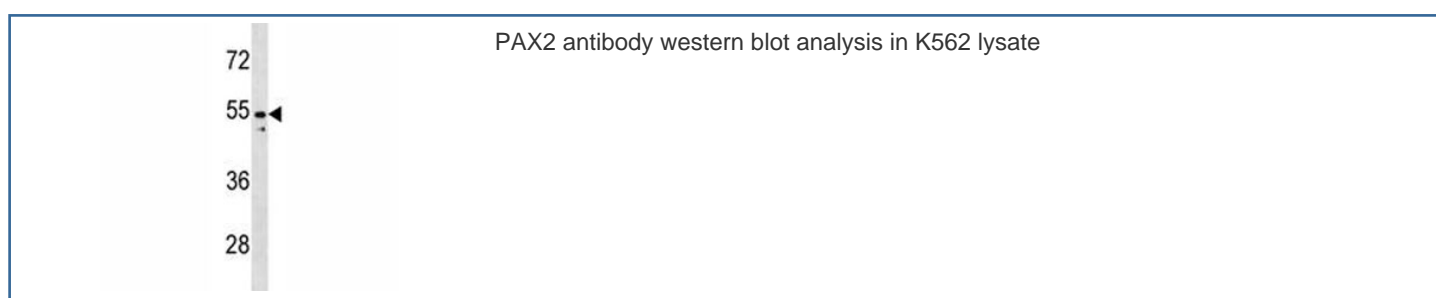


PAX2 Antibody (F45252)

Catalog No.	Formulation	Size
F45252-0.4ML	In 1X PBS, pH 7.4, with 0.09% sodium azide	0.4 ml
F45252-0.08ML	In 1X PBS, pH 7.4, with 0.09% sodium azide	0.08 ml

[Bulk quote request](#)

Availability	1-3 business days
Species Reactivity	Human
Format	Antigen affinity purified
Clonality	Polyclonal (rabbit origin)
Isotype	Rabbit Ig
Purity	Antigen affinity
UniProt	Q02962
Applications	Western Blot : 1:1000
Limitations	This PAX2 antibody is available for research use only.



Description

PAX2 encodes paired box gene 2, one of many human homologues of the *Drosophila melanogaster* gene *prd*. The central feature of this transcription factor gene family is the conserved DNA-binding paired box domain. PAX2 is believed to be a target of transcriptional suppression by the tumor suppressor gene WT1. Mutations within PAX2 have been shown to result in optic nerve colobomas and renal hypoplasia. Alternative splicing of this gene results in multiple transcript variants.

Application Notes

Titration of the PAX2 antibody may be required due to differences in protocols and secondary/substrate sensitivity.

Immunogen

A portion of amino acids 187-216 from the human protein was used as the immunogen for this PAX2 antibody.

Storage

Aliquot the PAX2 antibody and store frozen at -20oC or colder. Avoid repeated freeze-thaw cycles.