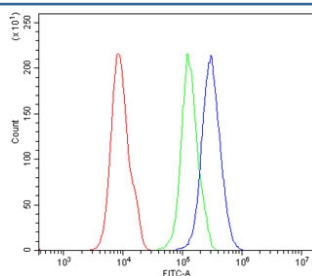


PAX1 Antibody (RQ5906)

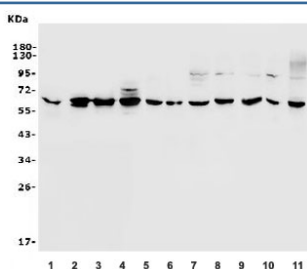
Catalog No.	Formulation	Size
RQ5906	0.5mg/ml if reconstituted with 0.2ml sterile DI water	100 ug

Bulk quote request

Availability	1-3 business days
Species Reactivity	Human, Mouse, Rat
Format	Antigen affinity purified
Clonality	Polyclonal (rabbit origin)
Isotype	Rabbit IgG
Purity	Affinity purified
Buffer	Lyophilized from 1X PBS with 2% Trehalose and 0.025% sodium azide
UniProt	P15863
Applications	Western Blot : 0.5-1ug/ml Flow Cytometry : 1-3ug/million cells Direct ELISA : 0.1-0.5ug/ml
Limitations	This PAX1 antibody is available for research use only.



Flow cytometry testing of human 293T cells with PAX1 antibody at 1ug/million cells (blocked with goat sera); Red=cells alone, Green=isotype control, Blue= PAX1 antibody.



Western blot testing of human 1) placenta, 2) SW579, 3) A431, 4) U-2 OS, 5) rat thymus, 6) rat ovary, 7) rat lung, 8) mouse thymus, 9) mouse ovary, 10) mouse lung and 11) mouse SP2/0 lysate with PAX1 antibody. Expected molecular weight: 45-55 kDa.

Description

This gene is a member of the paired box (PAX) family of transcription factors. Members of the PAX family typically contain a paired box domain and a paired-type homeodomain. These genes play critical roles during fetal development. This gene plays a role in pattern formation during embryogenesis and may be essential for development of the vertebral column. This gene is silenced by methylation in ovarian and cervical cancers and may be a tumor suppressor gene. Mutations in this gene are also associated with vertebral malformations.

Application Notes

Optimal dilution of the PAX1 antibody should be determined by the researcher.

Immunogen

Recombinant human protein (amino acids S218-P382) was used as the immunogen for the PAX1 antibody.

Storage

After reconstitution, the PAX1 antibody can be stored for up to one month at 4°C. For long-term, aliquot and store at -20°C. Avoid repeated freezing and thawing.