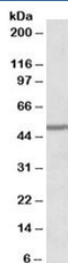


PAX1 Antibody (R35044)

Catalog No.	Formulation	Size
R35044-100UG	0.5 mg/ml in 1X TBS, pH7.3, with 0.5% BSA (US sourced) and 0.02% sodium azide	100 ug

[Bulk quote request](#)

Availability	1-3 business days
Species Reactivity	Human
Predicted Reactivity	Cow, Dog, Mouse, Pig
Format	Antigen affinity purified
Host	Goat
Clonality	Polyclonal (goat origin)
Isotype	Goat Ig
Purity	Antigen affinity
Gene ID	5075
Applications	Western Blot : 0.2-0.6ug/ml ELISA (peptide) LOD : 1:32000
Limitations	This PAX1 antibody is available for research use only.



Western blot testing of human cerebellum lysate with PAX1 antibody at 0.2ug/ml.
Predicted molecular weight: ~55kDa.

Description

Additional name(s) for this target protein: Paired box 1

Application Notes

Optimal dilution of the PAX1 antibody should be determined by the researcher.

Immunogen

Amino acids PKMEDWAGVNRT were used as the immunogen for this PAX1 antibody.

Storage

Aliquot and store the PAX1 antibody at -20oC.