

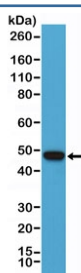
PAX-5 Antibody [clone RM331] (R20355)

Catalog No.	Formulation	Size
R20355-0.1ML	Antibody in PBS with 50% glycerol, 1% BSA and 0.09% sodium azide	100 ul

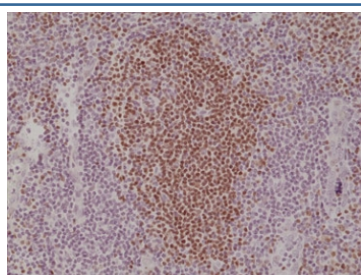
Recombinant **RABBIT MONOCLONAL**

[Bulk quote request](#)

Availability	1-3 business days
Species Reactivity	Human
Format	Purified
Clonality	Recombinant Rabbit Monoclonal
Isotype	Rabbit IgG
Clone Name	RM331
Purity	Protein A purified from animal origin-free supernatant
UniProt	Q02548
Localization	Nuclear
Applications	Immunohistochemistry (FFPE) : 1:500-1:1000 Western Blot : 1:1000-1:2000
Limitations	This recombinant PAX-5 antibody is available for research use only.



Western blot testing of human Raji cell lysate with PAX-5 antibody at 1:1000. Predicted molecular weight ~42 kDa.



IHC staining of FFPE human tonsil tissue with recombinant PAX-5 antibody at 1:1000.

Description

This antibody reacts to human Paired box protein Pax-5.

Application Notes

The stated application concentrations are suggested starting points. Titration of the recombinant PAX-5 antibody may be required due to differences in protocols and secondary/substrate sensitivity.

Immunogen

A peptide corresponding to C-terminus of human Paired box protein Pax-5 was used as the immunogen for the recombinant PAX-5 antibody.

Storage

Store the recombinant PAX-5 antibody at -20oC.