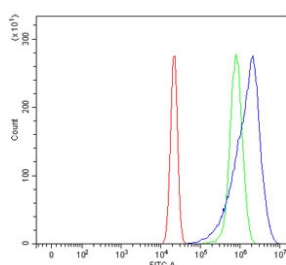


PATE1 Antibody / Prostate and testis expressed protein 1 (RQ7929)

Catalog No.	Formulation	Size
RQ7929	0.5mg/ml if reconstituted with 0.2ml sterile DI water	100 ug

Bulk quote request

Availability	1-3 business days
Species Reactivity	Human
Format	Antigen affinity purified
Clonality	Polyclonal (rabbit origin)
Isotype	Rabbit IgG
Purity	Antigen affinity purified
Buffer	Lyophilized from 1X PBS with 2% Trehalose
UniProt	Q8WXA2
Applications	Western Blot : 0.5-1ug/ml Flow Cytometry : 1-3ug/million cells Direct ELISA : 0.1-0.5ug/ml
Limitations	This PATE1 antibody is available for research use only.



Flow cytometry testing of human U-2 OS cells with PATE1 antibody at 1ug/million cells (blocked with goat sera); Red=cells alone, Green=isotype control, Blue= PATE1 antibody.



Western blot testing of human MCF7 cell lysate with PATE1 antibody. Predicted molecular weight ~14 kDa.

Description

Predicted to enable acetylcholine receptor regulator activity. Predicted to be involved in regulation of neurotransmitter receptor activity. Predicted to be located in extracellular region.

Application Notes

Optimal dilution of the PATE1 antibody should be determined by the researcher.

Immunogen

E. coli-derived recombinant human protein (amino acids S22-L126) was used as the immunogen for the PATE1 antibody.

Storage

After reconstitution, the PATE1 antibody can be stored for up to one month at 4°C. For long-term, aliquot and store at -20°C. Avoid repeated freezing and thawing.